



COSMO BIO Co., LTD.
Inspiration for Life Science



AteloCell™

Atelocollagen Honeycomb sponge

Cat No.:	CSH-10
Lot No.:	740114
ORIGIN:	Bovine dermis
STERILITY TEST:	Negative (medium: TGC-I and SCD)
CELL CULTURE TEST:	Normal (Human Fibroblast)
DIAMETER OF PORES:	200 ~ 400 μm
STORAGE:	Room Temperature
REFERENCES:	Refer to the AteloCell™ website http://www.cosmobio.co.jp/

FOR RESERCH USE ONLY, NOT FOR HUMAN BODY.

Manufactured by KOKEN Co., Ltd. 



COSMO BIO Co., LTD.
Inspiration for Life Science

TOYO 2CHOME, KOTO-KU, TOKYO, 135-0016, JAPAN
<http://www.cosmobio.co.jp> e-mail : export@cosmobio.co.jp
Phone : +81-3-5632-9617 FAX : +81-3-5632-9618

Collagen Sponge Honeycomb (KOU-CSH-10, KOU-CSH-96)

Cell culturing using Collagen Sponge Honeycomb KOU-CSH-10, KOU-CSH-96 (scaffold)

1. Defoaming

Method 1

- (1) Add scaffolds into sterile centrifuge tubes containing culture medium or PBS(-)
- (2) Defoam by centrifuging at 1000 rpm for 10 minutes.

Method 2

- (1) Add 15 mL of culture medium or PBS(-) into the bottle containing scaffolds.
- (2) Remove bubbles by pressing scaffolds with a stick.

Method 3

- (1) Add 10 mL of culture medium or PBS(-) into the bottle containing scaffolds.
- (2) Due to the air inside scaffolds, most of them float in the bottle. Transfer them into a 100 mL -spinner flask containing 90 mL of culture medium or PBS(-)
- (3) Defoam by stirring for a day at 40 rpm at 4°C

2. Seeding cells

- (1) After defoaming, in case of method 2 and 3, change culture medium or PBS(-) in the flask to fresh medium. Use 100-200 mg of scaffolds for 100 mL of culture medium. The volume of scaffolds is about 15-30 mL when swelling.
- (2) The number of cells to seed is about 1×10^6 cells/100 mL of culture medium.
- (3) After stirring at 10-15 rpm for a minute, allow to stand. Stirring for 30 seconds every 30 minutes (15-30 rpm). Continuing the process for two hours allows cells to adhere to the scaffolds.

3. Culturing cells

After confirming the cell adhesion to scaffolds, stir culture medium gently as to move scaffolds very slowly and culture cells.

Actual cell growth curve is shown in Figure 3. Collagen Sponge Honeycomb is capable of increasing cells to almost 7×10^7 /mL by 2 to 3 weeks of cell culture.

Figure 1. Defoaming method 3 (Stir at 4°C)

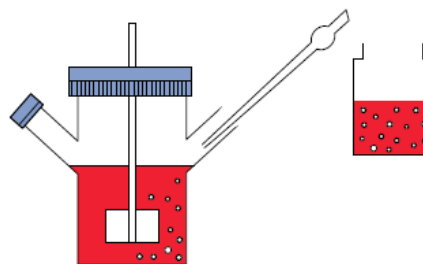


Figure 2. Cell adhesion method

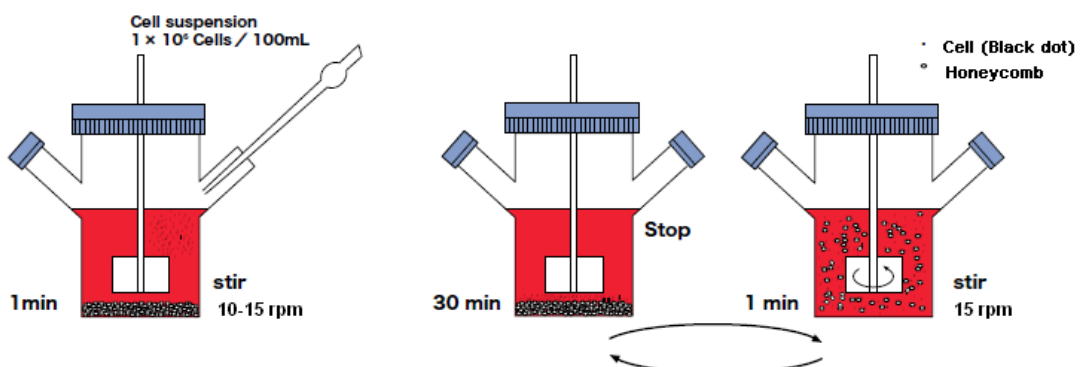


Figure 3. Cell Growth Curve of F-7000 cells on Collagen Sponge Honeycomb (KOU-CSH-10)

Actual cell growth curve is shown as below. Collagen Sponge Honeycomb is capable of increasing cells to almost 7×10^7 /mL by 2 to 3 weeks of cell culture.

