



Code No. KAL-KY041-EX

For research use only

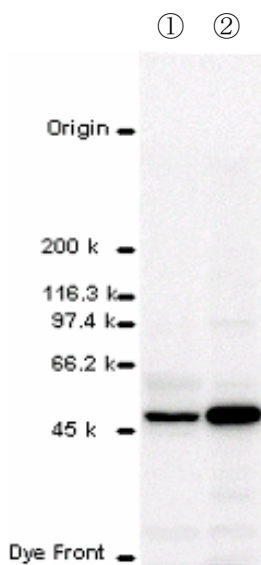
## Anti Ca<sup>2+</sup> /Calmodulin-Dependent Protein Kinase II δ1 – δ4 polyclonal antibody, Rabbit

Ca<sup>2+</sup>/calmodulin-dependent protein kinase II (CaM kinase II) may play key roles in various Ca<sup>2+</sup>-induced cellular functions. Interestingly, many kinds of isoforms have been identified in various tissues or cells. Recently, it has been revealed that some isoforms are located in specific regions in the cells, so it is speculated that these isoforms have physiologically particular functions in each region.

There are four different isoforms such as  $\alpha$ ,  $\beta$ ,  $\gamma$  and  $\delta$ . This antibody reacts with  $\delta 1 - \delta 4$  splice variants. Immunochemical studies indicate that  $\delta 2$  is expressed in various tissues or cells such as insulinoma cells and that  $\delta 3$  is abundant in the nucleus in cerebellar granule cells. These results suggest that  $\delta 3$  is involved in Ca<sup>2+</sup>-dependent gene expression.

This antibody has been proved to be useful for the immunoblotting and immunohistochemistry.

Package Size	200 $\mu$ g ( 200 $\mu$ L / vial )
Format	Rabbit polyclonal antibody 1 mg/mL
Buffer	0.1% Proclin as bacteriostat, 50% Block Ace as a stabilizer in PBS
Storage	Store below -20°C Once thawed, store at 4°C. Repeated freeze-thaw cycles should be avoided.
Purification method	This antibody was purified from rabbit serum immunized with 15-amino acid segment from unique carboxyl-terminal ends of CaM kinaseII $\delta 1 - \delta 4$ isoforms by peptide affinity chromatography.
Working dilution	Immunohistochemistry: 15 $\mu$ g/mL ,for immunoblotting: 10~20 $\mu$ g/mL



### Immunoblotting

Sample:

- ① MIN6 (control)
- ② MIN6 (after overexpression of  $\delta 2$ )

Preparation of antibodies and instruction

Hideyuki Yamamoto

Department of Pharmacology and Neuropsychiatry,

Faculty of Medicine, Kumamoto University, Japan



For research use only

## Anti-Ca<sup>2+</sup> /Calmodulin-Dependent Protein Kinase II δ1-δ4 polyclonal antibody, Rabbit

### 【Reference】

1. Matumono, K., Ebihara, K., Yamamoto, H., Tabuchi, H., Fukunaga, K., Yasunami, M., Ohkubo, H., Shichiri, M., Miyamoto, E.: *J. Biol. Chem.*, 274, 2053-2059 (1999)
2. Tabuchi, H., Yamamoto, H., Matsumoto, K., Ebihara, K., Takeuchi, Y., Fukunaga, K., Hiraoka, H., Sakai, Y., Shichiri, M., Miyamoto, E.: *Endocrinology*, 141, 2350-2360 (2000)
3. Takeuchi, Y., Yamamoto, H., Matsumoto, K., Kimura, T., Katsuragi, S., Miyakawa, T., Miyamoto, E.: *J. Neurochem.*, 72, 815-825 (1999)
4. Takeuchi, Y., Yamamoto, H., Miyakawa, T., Miyamoto, E.: *J. Neurochem.*, 74, 1913-1922 (2000)
5. Takeuchi, Y., Yamamoto, H., Fukunaga, K., Miyakawa, T., Miyamoto, E.: *J. Neurochem.*, 74, 2557-2567 (2000)

### Distributor



COSMO BIO Co., LTD.  
Inspiration for Life Science

TOYO EKIMAE BLDG. 2-20, TOYO 2CHOME  
KOTO-KU, TOKYO 135-0016, JAPAN  
TEL : +81-3-5632-9617  
FAX : +81-3-5632-9618  
URL : <http://www.cosmobio.co.jp/>  
e-mail : [export@cosmobio.co.jp](mailto:export@cosmobio.co.jp)

### Manufacturer

 TransGenic Inc.

7-1-6 Minatojima-minami-machi,  
Chuo-ku, Kobe, 650-0047 JAPAN  
TEL : +81-78-306-0590  
FAX : +81-78-306-0589  
URL : <http://www.transgenic.co.jp/>  
e-mail : [techstaff@transgenic.co.jp](mailto:techstaff@transgenic.co.jp)