

KX590

For research use only

Anti Human GPR162 Monoclonal Antibody

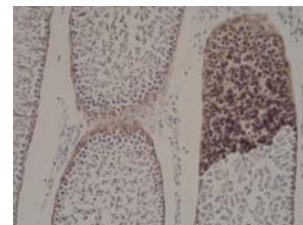
Clone No. 1B9

This product is generated from GANP® mice.



Code No. KX590
Target GPR162
Category GPCR
Gene ID 27239
Primary Source HGNC:16693
Synonyms A-2; GRCA; FLJ78837

Type Monoclonal Antibody
Immunogen Partial peptide of Human GPR162 (1st extracellular domain)



[IHC] Rat testis tissue

Raised in GANP® mouse
Myeloma P3U1
Clone number 1B9
Purification ProteinG
Source Serum-free medium
Isotype IgG2b, κ
Cross Reactivity Rat
Label Unlabeled
Concentration 0.25 mg/mL
Contents (Volume) 50 μ g (200 μ L/vial)
Buffer PBS [containing 2% Block Ace as a stabilizer, 0.1% Proclin as a bacteriostat]
Storage Store at - 20 °C long term, store at 4 °C short term. Avoid repeated freeze-thaw cycles.

Application ELISA,IHC

ELISA	WB	IHC	ICC
1.0	Not tested	5.0-10	Not tested
IP	FCM	IF	Neutralization
Not tested	Not tested	Not tested	Not tested

(μ g/mL)

Reference

1. "A gene-rich cluster between the CD4 and triosephosphate isomerase genes at human chromosome 12p13." Ansari-Lari M.A. et al. Genome Res. 6:314-326(1996) [PubMed: 8723724] [Abstract]. Cited for: NUCLEOTIDE SEQUENCE [GENOMIC DNA / MRNA] (ISOFORMS 1 AND 2).
2. "Large-scale sequencing in human chromosome 12p13: experimental and computational gene structure determination." Ansari-Lari M.A. et al. Genome Res. 7:268-280(1997) [PubMed: 9074930] [Abstract]. Cited for: NUCLEOTIDE SEQUENCE [GENOMIC DNA].
3. "The status, quality, and expansion of the NIH full-length cDNA project: the Mammalian Gene Collection (MGC)." The MGC Project Team. Genome Res. 14:2121-2127(2004) [PubMed: 15489334] [Abstract]. Cited for: NUCLEOTIDE SEQUENCE [LARGE SCALE MRNA] (ISOFORM 2), VARIANT GLY-459. Tissue: Brain and Lung.

UniPlot Summary

//Function Orphan receptor.
//Subcellular location Cell membrane; Multi-pass membrane protein By similarity.
//Sequence similarities Belongs to the G-protein coupled receptor 1 family.

Manufactured by  Trans Genic Inc.



COSMO BIO CO., LTD.

Inspiration for Life Science

TOYO 2CHOME, KOTO-KU, TOKYO, 135-0016, JAPAN

<http://www.cosmobio.co.jp> e-mail : export@cosmobio.co.jp

Phone : +81-3-5632-9617 FAX : +81-3-5632-9618