

**KX589**

For research use only

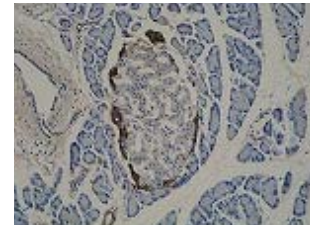
# Anti Human GPR108 Monoclonal Antibody

Clone No. 2H9

This product is generated from GANP® mice.



**Code No.** KX589  
**Target** GPR108  
**Category** GPCR  
**Gene ID** 56927  
**Primary Source** HGNC:17829  
**Synonyms** LUSTR2; MGC14393  
**Type** Monoclonal Antibody  
**Immunogen** Partial peptide of Human GPR108 (1st extracellular domain)



[IHC] Rat pancreas tissue

**Raised in** GANP® mouse  
**Myeloma** P3U1  
**Clone number** 2H9  
**Purification** ProteinG  
**Source** Serum-free medium  
**Isotype** IgG3, $\kappa$   
**Cross Reactivity** Rat  
**Label** Unlabeled  
**Concentration** 0.25 mg/mL  
**Contents (Volume)** 50  $\mu$ g (200  $\mu$ L/vial)  
**Buffer** PBS [containing 2% Block Ace as a stabilizer, 0.1% Proclin as a bacteriostat]  
**Storage** Store at - 20 °C long term, store at 4 °C short term. Avoid repeated freeze-thaw cycles.

**Application** ELISA,IHC

ELISA	WB	IHC	ICC
1.0	Not tested	5.0-10	Not tested
IP	FCM	IF	Neutralization
Not tested	Not tested	Not tested	Not tested

( $\mu$ g/mL)

## Reference

- Mural R.J et al. Submitted (SEP-2005) to the EMBL/GenBank/DDBJ databases. Cited for: NUCLEOTIDE SEQUENCE [LARGE SCALE GENOMIC DNA].
- "The status, quality, and expansion of the NIH full-length cDNA project: the Mammalian Gene Collection (MGC)." The MGC Project Team. Genome Res. 14:2121-2127(2004) [PubMed: 15489334] [Abstract]. Cited for: NUCLEOTIDE SEQUENCE [LARGE SCALE MRNA]. Tissue: Brain.
- The European IMAGE consortium. Submitted (JUL-2000) to the EMBL/GenBank/DDBJ databases. Cited for: NUCLEOTIDE SEQUENCE [LARGE SCALE MRNA] OF 8-543.

## UniPlot Summary

//Subcellular location Membrane; Multi-pass membrane protein Potential.  
//Sequence similarities Belongs to the LU7TM family

Manufactured by  TransGenic Inc.



COSMO BIO Co., LTD.  
Inspiration for Life Science

TOYO 2CHOME, KOTO-KU, TOKYO, 135-0016, JAPAN

http://www.cosmobio.co.jp e-mail : export@cosmobio.co.jp

Phone : +81-3-5632-9617 FAX : +81-3-5632-9618