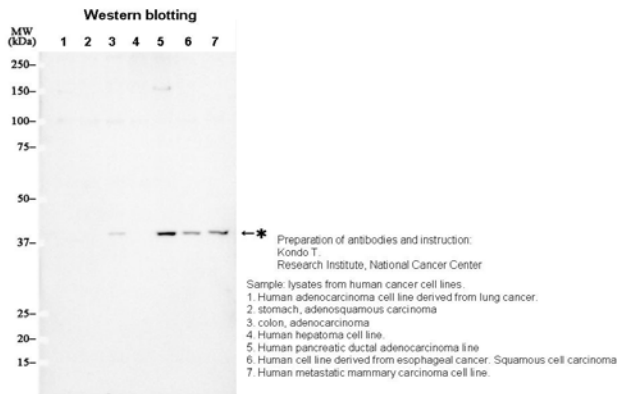




KX449 Anti Human GPR44 Monoclonal Antibody (Clone No. 8F2)		Gene ID	11251
Primary Source	HGNC: 4502		
Type	Monoclonal	Keyword	
Immunogen	Partial peptide of human GPR44 (3rd extracellular domain)	G protein-coupled receptor 44; DP2; CD294; CRTH2	
Raised in	GANP mouse		
Myeloma	P3U1		
Clone number	8F2		
Isotype	IgG1, κ		
Source	Serum-free medium	Application	
Purification notes	ProteinG	WB	20 μ g/mL
Cross Reactivity	Not tested	IHC	Not tested
Concentration	0.25 mg/mL	ICC	Not tested
Contents (Volume)	50 μ g (200 μ L/vial)	ELISA	1.0 μ g/mL
Label	Unlabeled	FCM	Not tested
Buffer	PBS [containing 2 % Block Ace as a stabilizer, 0.1 %Proclin as a bacteriostat]	Neutralization	Not tested
Storage	Store below -20 °C. Once thawed, store at 4 °C. Repeated freeze-thaw cycles should be avoided.	IP	Not tested



Note

CRTH2, also known as GPR44, DP2, CD294, is a member of G protein-coupled receptor and activated by prostaglandin D2 (PGD2) and its PGD2 metabolites. CRTH2 is predominantly expressed on Th2-type T cells, eosinophils and basophils and mediates their chemotaxis to PGD2. CRTH2 mediates the respiratory burst and degranulation of eosinophils, induces the production of proinflammatory cytokines in Th2 cells, and enhances the release of histamine from basophils. PGD2-CRTH2 system also may play important roles in the development of chronic allergic skin inflammation.

Note

CRTH2 は、G タンパク質共役型受容体 (GPCR) の一つで、プロスタグランジン D2 (PGD2) やその代謝物で活性化されます。CRTH2 は Th2 細胞、好酸球、好塩基球に高発現しており、PGD2 に対する走化性を仲介します。CRTH2 は呼吸性バースト、好酸球の脱顆粒、Th2 細胞からの炎症誘発性サイトカイン産生を仲介し、好塩基球からのヒスタミン放出を促進します。PGD2-CRTH2 シグナルは慢性アレルギー性皮膚炎に重要な役割を果たしていることも想定されています。

Reference

- Iwasaki M et al: Association of a new-type prostaglandin D2 receptor CRTH2 with circulating T helper 2 cells in patients with atopic dermatitis. J Invest Dermatol. 2002 Sep;119(3):609-16.
- Satoh T et al: Prostaglandin D2 plays an essential role in chronic allergic inflammation of the skin via CRTH2 receptor. J Immunol. 2006 Aug 15;177(4):2621-9.

WARNING AND PRECAUTION

- Not for diagnostic use. The safety and efficacy of product in diagnostic or other clinical uses has not been established.
- Harmful by inhalation, in contact with skin and if swallowed. Do not breathe dust. Avoid contact with skin and eyes.
- If contact with skin and eyes, wash all affected areas with large volume of water. If inhaled remove to fresh air. In severe case obtain medical attention.
- Wash hand thoroughly after handling the product.
- Do not use this product if container is broken or some contaminants are detected.
- When preserving the product, Close the container, ensure it does not fall aside or down.
- Dispose of the container and expired reagents in accordance with federal, state and local government regulations.
- Do not use the container and accessories of the product for other purpose.

取り扱い上の注意

この添付文書をよく読んでから使用して下さい。

- 本品は研究用試薬であり、医薬品その他の目的にはご使用になれません。
- 取り扱い中は皮膚、粘膜、着衣に触れたり、目に入らないように適切な措置を行って下さい。
- 試薬が顔や目や口に入った場合には、水で十分に洗い流すなどの応急処置を行い、必要があれば医師の手当を受けて下さい。
- 取り扱い後には手洗いを十分に行ってください。
- 容器の破損、異物混入等異常が認められた物は使用しないで下さい。
- 試薬を保管する場合は、蓋をし、転倒落下防止を確実にし、指定の貯蔵方法で保管して下さい。
- 使用後の容器は、廃棄物に関する規定に従って処理して下さい。
- 容器、付属品等の他目的への転用は保証できません。

Manufactured by TransGenic Inc.



COSMO BIO Co., LTD.
Inspiration for Life Science

TOYO 2CHOME, KOTO-KU, TOKYO, 135-0016, JAPAN

http://www.cosmobio.co.jp e-mail : export@cosmobio.co.jp

Phone : +81-3-5632-9617 FAX : +81-3-5632-9618