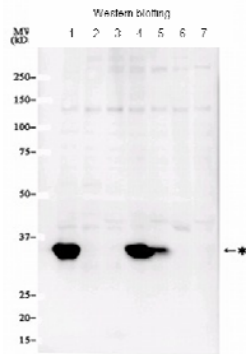




KX446 Anti Human MAS1 Monoclonal Antibody (Clone No. 15A10)		Gene ID	4142
Primary Source	HGNC: 6899	Keyword	
Type	Monoclonal	MAS1 oncogene; MAS; MGC119966	
Immunogen	Partial peptide of human MAS1		
Raised in	GANP mouse		
Myeloma	P3U1		
Clone number	15A10		
Isotype	IgG1,k		
Source	Serum-free medium	Application	
Purification notes	ProteinG	WB	20 µg/mL
Cross Reactivity	Not tested	IHC	Not tested
Concentration	0.25 mg/mL	ICC	Not tested
Contents (Volume)	50 µg (200 µL/vial)	ELISA	1.0 µg/mL
Label	Unlabeled	FCM	Not tested
Buffer	PBS [containing 2 % Block Ace as a stabilizer, 0.1 % Proclin as a bacteriostat]	Neutralization	Not tested
Storage	Store below -20 °C. Once thawed, store at 4 °C. Repeated freeze-thaw cycles should be avoided.	IP	Not tested



Preparation of antibodies and injection:
Kendo T.
Research Institute, National Cancer Center

Sample lysates from human cancer cell lines.
1. Human endocervix carcinoma cell line derived from lung cancer.
2. stomach adenocarcinoma
3. colon adenocarcinoma
4. Human hepatoma cell line.
5. Human pancreatic ductal adenocarcinoma line
6. Human cell line derived from esophageal cancer. Squamous cell carcinoma.
7. Human metastatic mammary carcinoma cell line.



This product is generated from GANP®

Note

MAS1/MAS is a member of G protein-coupled receptor and was first detected in vivo through its tumorigenic activity. MAS1 is expressed predominantly in testis and distinct areas of forebrain such as hippocampus and amygdala. MAS1 acts as a functional antagonist of AT1 (angiotensin II type 1) receptor and modulates intracellular signaling of AT1 after angiotensin II stimulation, and binds Ang II metabolite Ang-(1-7). MAS1 may play a role in the regulation of blood pressure and cardiovascular homeostasis.

Note

MAS1/MAS は、G タンパク質共役型受容体 (GPCR) の一つで、腫瘍化活性を持つ生体分子として同定されました。MAS1 は精巣に発現するほか、海馬、扁桃体といった前脳に発現しています。MAS1 は AT1 (アンジオテンシン II タイプ 1) 受容体のアンタゴニストとして機能するほか、アンジオテンシン II (Ang II) 刺激による AT1 細胞内シグナルを調節します。また MAS1 は Ang II 代謝物 Ang-(1-7) と結合します。MAS1 は血圧の調節や循環器系の恒常性に関与していると考えられます。

Reference

- | | | |
|--------------------|---|--|
| 1 Alenina N et al: | Cell type-specific expression of the Mas proto-oncogene in testis. | J Histochem Cytochem.
2002 May;50(5):691-6.
Proc Natl Acad Sci U S A.
2003 Jul 8;100(14):8258-63. Epub 2003 Jun 26. |
| 2 Santos RA et al: | Angiotensin-(1-7) is an endogenous ligand for the G protein-coupled receptor Mas. | J Biol Chem.
2006 Jun 16;281(24):16757-67. Epub 2006 Apr 11. |
| 3 Canals M et al: | Up-regulation of the angiotensin II type 1 receptor by the MAS proto-oncogene is due to constitutive activation of Gq/G11 by MAS. | |

WARNING AND PRECAUTION

- Not for diagnostic use. The safety and efficacy of product in diagnostic or other clinical uses has not been established.
- Harmful by inhalation, in contact with skin and if swallowed. Do not breathe dust. Avoid contact with skin and eyes.
- If contact with skin and eyes, wash all affected areas with large volume of water. If inhaled remove to fresh air. In severe case obtain medical attention.
- Wash hand thoroughly after handling the product.
- Do not use this product if container is broken or some contaminants are detected.
- When preserving the product, Close the container, ensure it does not fall aside or down.
- Dispose of the container and expired reagents in accordance with federal, state and local government regulations.
- Do not use the container and accessories of the product for other purpose.

取り扱い上の注意

- この添付文書をよく読んでから使用して下さい。
- 本品は研究用試薬であり、医薬品その他の目的にはご使用になれません。
 - 取り扱い中は皮膚、粘膜、着衣に触れたり、目に入らないように適切な措置を行って下さい。
 - 試薬が誤って目や口に入った場合には、水で十分に洗い流すなどの応急処置を行い、必要があれば医師の手当を受けて下さい。
 - 取り扱い後には手洗いを十分に行ってください。
 - 容器の破損、異物混入等異常が認められた物は使用しないで下さい。
 - 試薬を保管する場合は、蓋をし、転倒落下防止を確実にし、指定の貯蔵方法で保管して下さい。
 - 使用後の容器は、廃棄物に関する規定に従って処理して下さい。
 - 容器、付属品等の他目的への転用は保証できません。

Manufactured by Trans Genic Inc.



COSMO BIO Co., LTD.
Inspiration for Life Science

TOYO 2CHOME, KOTO-KU, TOKYO, 135-0016, JAPAN

http://www.cosmobio.co.jp e-mail : export@cosmobio.co.jp

Phone : +81-3-5632-9617 FAX : +81-3-5632-9618