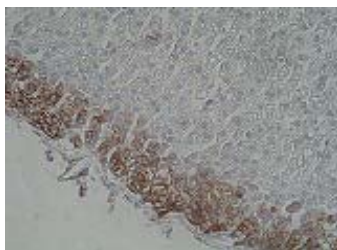
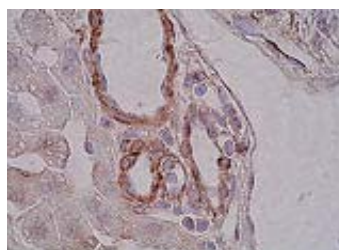




| KX413 Anti Human P2RY12 Monoclonal Antibody (Clone No. 2A6) |  | Gene ID  | 64805      |
|---|--|--|------------|
| Primary Source  | HGNC: 18124  | Keyword  |            |
| Type  | Monoclonal   | purinergic receptor P2Y, G-protein coupled, 12; HORK3; P2Y12; ADPG-R; SP1999; P2T(AC); P2Y(AC); P2Y(ADP); P2Y(cyc) |            |
| Immunogen   | Partial peptide of human P2RY12  | Application  |            |
| Raised in   | GANP mouse   | WB   | Not tested |
| Myeloma   | P3U1   | IHC  | 5.0 µg/mL  |
| Clone number  | 2A6  | ICC  | Not tested |
| Isotype   | IgG2b,k  | ELISA  | 1.0 µg/mL  |
| Source  | Serum-free medium  | FCM  | Not tested |
| Purification notes  | ProteinG   | Neutralization   | Not tested |
| Cross Reactivity  | Rat  | IP   | Not tested |
| Concentration   | 0.25 mg/mL   |  |            |
| Contents (Volume)   | 50 µg (200 µL/vial)  |  |            |
| Label   | Unlabeled  |  |            |
| Buffer  | PBS [containing 2 % Block Ace as a stabilizer, 0.1 % Proclin as a bacteriostat]                |  |            |
| Storage   | Store below -20 °C. Once thawed, store at 4 °C. Repeated freeze-thaw cycles should be avoided. |  |            |



Rat adrenal gland



Rat liver



This product is generated from GANP®

Note

P2RY12 is a member of G protein-coupled receptor and belongs to P2RY family activated primarily by ATP, UTP, UDP and ADP. P2RY12 is highly expressed in brain, spinal cord and blood platelets. P2RY12 is a Gαi-linked receptor that is potently activated by ADP and causes inhibition of forskolin-stimulated adenylyl cyclase activity.

The patients who have a congenital hemorrhagic disease caused by the inability of their platelet to aggregate in response to ADP contains 2-base-pair deletion in one of the P2RY12 alleles that results in the loss of platelet P2RY12 mRNA transcripts. P2RY12 deficient mice display highly prolonged bleeding times. It has been shown that ADP neither promoted platelet aggregation nor inhibited adenylyl cyclase in platelets derived from these mice.

Note

P2RY12 は G タンパク質共役型受容体 (GPCR) の一つであり、ATP、UTP、UDP、ADP によって活性化される P2RY ファミリーに属しています。P2RY12 は脳、脊髄、血小板に高発現しています。P2RY12 は Gαi 結合受容体であり、ADP によって活性化され、アデニル酸シクラーゼ活性を阻害します。

ADP に応答して血小板が凝固する機能が損なわれている先天性出血性疾患患者では、P2RY12 遺伝子が 2 塩基欠損しています。P2RY12 欠損マウスでは出血時間が長くなるほか、血小板の凝集が促進されず、アデニル酸シクラーゼ阻害も生じないことが示されています。

Reference

- |                        |   |   |
|------------------------|---|---|
| 1 Zhang FL. et al:     | ADP is the cognate ligand for the orphan G protein-coupled receptor SP1999.   | J Biol Chem.<br>2001 Mar 16;276(11):8608-15. Epub 2000 Dec 4. |
| 2 Hollopeter G. et al: | Identification of the platelet ADP receptor targeted by antithrombotic drugs.   | Nature.<br>2001 Jan 11;409(6817):202-7.                       |
| 3 Nicholas RA          | Identification of the P2Y(12) receptor: a novel member of the P2Y family of receptors activated by extracellular nucleotides. | Mol Pharmacol.<br>2001 Sep;60(3):416-20.                      |
| 4 Dorsam RT. et al:    | Central role of the P2Y12 receptor in platelet activation.  | J Clin Invest.<br>2004 Feb;113(3):340-5. Review.              |

WARNING AND PRECAUTION

- Not for diagnostic use. The safety and efficacy of product in diagnostic or other clinical uses has not been established.
- Harmful by inhalation, in contact with skin and if swallowed. Do not breathe dust. Avoid contact with skin and eyes.
- If contact with skin and eyes, wash all affected areas with large volume of water. If inhaled remove to fresh air. In severe case obtain medical attention.
- Wash hand thoroughly after handling the product.
- Do not use this product if container is broken or some contaminants are detected.
- When preserving the product. Close the container, ensure it does not fall aside or down.
- Dispose of the container and expired reagents in accordance with federal, state and local government regulations.
- Do not use the container and accessories of the product for other purpose.

取り扱い上の注意

- この添付文書をよく読んでから使用して下さい。
- 本品は研究用試薬であり、医薬品その他の目的にはご使用になれません。
  - 取り扱い中は皮膚、粘膜、着衣に触れたり、目に入らないように適切な措置を行って下さい。
  - 試薬が誤って目や口に入った場合には、水で十分に洗い流すなどの応急処置を行い、必要があれば医師の手当を受けて下さい。
  - 取り扱い後には手洗いを十分に行ってください。
  - 容器の破損、異物混入等異常が認められた物は使用しないで下さい。
  - 試薬を保管する場合は、蓋をし、転倒落下防止を確実にし、指定の貯蔵方法で保管して下さい。
  - 使用後の容器は、廃棄物に関する規定に従って処理して下さい。
  - 容器、付属品等の他目的への転用は保証できません。

Manufactured by



COSMO BIO CO., LTD.  
Inspiration for Life Science

TOYO 2CHOME, KOTO-KU, TOKYO, 135-0016, JAPAN  
http://www.cosmobio.co.jp e-mail : export@cosmobio.co.jp  
Phone : +81-3-5632-9617 FAX : +81-3-5632-9618