



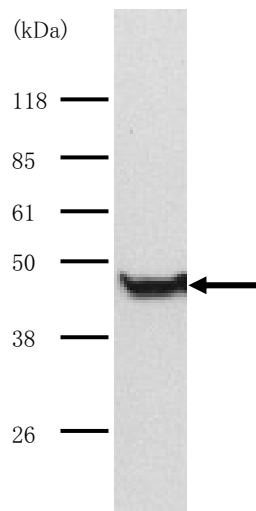
Code No.KAL-KR089-EX

For research use only

## Anti CapG Polyclonal Antibody

CapG : macrophage-capping protein

Package Size	25 $\mu$ g (100 $\mu$ L / vial)
Format	Rabbit polyclonal antibody 0.25mg/mL
Buffer	PBS [containing 50% Block Ace as a stabilizer, 0.1% Proclin as a bacteriostat]
Storage	Store below -20 $^{\circ}$ C Once thawed, store at 4 $^{\circ}$ C. Repeated freeze-thaw cycles should be avoided.
Purification method	This antibody was purified from rabbit serum immunized with GST-human CapG by GST affinity chromatography.
Working dilution	For western blotting ;0.1~0.5 $\mu$ g/mL This antibody reacts with mouse CapG.



### Western blotting

Sample : Human fibroblast extract

Dr. Yutsudo, M

At Research Institute for Microbial Diseases, Osaka University Japan



## Anti Cap G Polyclonal Antibody

CapG : macrophage-capping protein

### 【Reference】

1. Dabiri GA. et al. : J Biol Chem. 1992 Aug 15;267(23):16545-52
2. Witke W. et al. : J Cell Biol. 2001 Aug 20;154(4):775-84
3. Pellicieux C. et al. : J Biol Chem. 2003 Aug 1;278(31):29136-44

### Distributor



COSMO BIO Co., LTD.  
Inspiration for Life Science

TOYO EKIMAE BLDG. 2-20, TOYO 2CHOME  
KOTO-KU, TOKYO 135-0016, JAPAN  
TEL : +81-3-5632-9617  
FAX : +81-3-5632-9618  
URL : <http://www.cosmobio.co.jp/>  
e-mail : [export@cosmobio.co.jp](mailto:export@cosmobio.co.jp)

### Manufacturer

 Trans Genic Inc.

7-1-6 Minatojimaminami-machi,  
Chuo-ku, Kobe, 650-0047 JAPAN  
TEL : +81-78-306-0590  
FAX : +81-78-306-0589  
URL : <http://www.transgenic.co.jp/>  
e-mail : [techstaff@transgenic.co.jp](mailto:techstaff@transgenic.co.jp)