



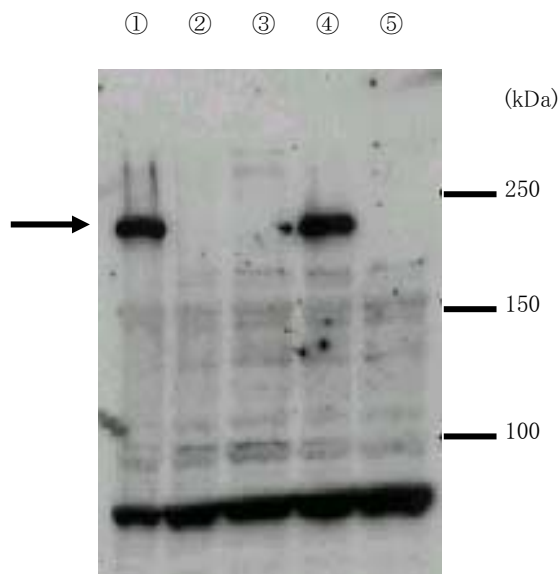
Code No.KAL-KR086-EX

For research use only

Anti Brm Polyclonal Antibody

Package Size	25 μ g (100 μ L / vial)
Format	Rabbit polyclonal antibody 0.25mg/mL
Buffer	PBS [containing 50% Block Ace as a stabilizer, 0.1% Proclin as a bacteriostat]
Storage	Store below -20°C Once thawed, store at 4°C. Repeated freeze-thaw cycles should be avoided.
Purification method	This antibody was purified from rabbit serum immunized with synthesized partial peptide of human Brm Protein by peptide affinity chromatography.
Working dilution	For Western blotting ; 1~3 μ g/mL For Immunoprecipitation ; 3 μ g

Western blotting



Sample : cell lysate

- ① MDA-MB435 cell
- ② SW13 (vimentin-) cell (Negative Control)
- ③ Vector transgenic cell SW13 (vim-) cell
- ④ Brm transgenic cell SW13 (vim-) cell
- ⑤ BRG1 transgenic cell SW13 (vim-) cell

(※BRG1 : The ortholog of human Brm)

Preparation of antibodies and instruction

Dr. Hideo Iba Dr. Hirotaka Watanabe
Institute of Medical Science Institute of Medical Science ,The University of Tokyo
Department of Microbiology and Immunology Department of Microbiology and Immunology
Div. Host-Parasite Interaction



Code No.KAL-KR086-EX

Anti Brm Polyclonal Antibody

【Reference】

1. Iba H. et al. : Rev Med Virol. 2003 Mar-Apr;13(2):99-110
2. Klochendler-Yeivin A. et al. : Curr Opin Genet Dev. 2002 Feb;12(1):73-9
3. Sudarsanam P. et al. : Trends Genet. 2000 Aug;16(8):345-51
4. Yamamichi-Nishina M. et al. : J Biol Chem. 2003 Feb 28;278(9):7422-30
5. Mizutani T. et al. : J Biol Chem. 2002 May 3;277(18):15859-64
6. Ito T. et al. : J Biol Chem. 2001 Jan 26;276(4):2852-7
7. Kadam S. et al. : Mol Cell. 2003 Feb;11(2):377-89
8. Reisman DN. et al. : Oncogene. 2002 Feb 14;21(8):1196-207

Distributor



COSMO BIO Co., LTD.
Inspiration for Life Science

TOYO EKIMAE BLDG. 2-20, TOYO 2CHOME
KOTO-KU, TOKYO 135-0016, JAPAN
TEL : +81-3-5632-9617
FAX : +81-3-5632-9618
URL : <http://www.cosmobio.co.jp/>
e-mail : export@cosmobio.co.jp

Manufacturer



Trans Genic Inc.

7-1-6 Minatojimaminami-machi,
Chuo-ku, Kobe,650-0047 JAPAN
TEL : +81-78-306-0590
FAX : +81-78-306-0589
URL : <http://www.transgenic.co.jp/>
e-mail : techstaff@transgenic.co.jp