



Code No.KAL-KR072-EX

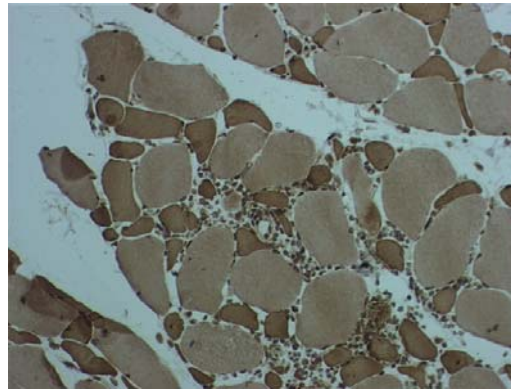
For Research Use Only

## Anti Human Chemokine-like factor 1 Polyclonal Antibody, Rabbit

Chemokine is a member of cytokines (interleukin, interferon etc.) and is known to activate chemokinesis of leukocytes. Chemokine-like factor 1 (CKLF1) is a novel chemokine and expressed on various types of tissue. It may play a role of chemokinetic induction on neutrophils, monocytes and lymphocytes. And CKLF1 is thought to be involved in reproduction of skeletal muscle cell.

The antibody was established from the purified serum immunized with partial peptide of human CKLF1. It is useful for immunohistochemical detection of CKLF 1.

Package Size	25 $\mu$ g (100 $\mu$ L/vial)
Format	Rabbit polyclonal antibody 0.25mg/mL
Buffer	PBS [containing 50% Block Ace as a stabilizer, 0.1% Proclin as a bacteriostat]
Storage	Below $-20^{\circ}\text{C}$
Purification method	This antibody was purified from rabbit serum by affinity chromatography.
Working dilution	For Immunohistochemistry ; 1~10 $\mu$ g/mL



### Immunohistochemistry

Sample : biopsied muscle of a patient with multiple myositis

Preparation of antibodies and instruction :

Drs. Kobayashi S. and Nagai A. at Department of Internal Medicine III,  
Shimane Medical University



## Anti Human Chemokine-like factor 1 Polyclonal Antibody, Rabbit

### 【Reference】

1. Han W. et al. : Biochem J. 2001 Jul 1;357(Pt1):127-35
2. Lou Y. et al. : Gene. 2003 Mar 27;307:125-32

### Distributor



COSMO BIO Co., LTD.  
Inspiration for Life Science

TOYO EKIMAE BLDG. 2-20, TOYO 2CHOME  
KOTO-KU, TOKYO 135-0016, JAPAN  
TEL : +81-3-5632-9617  
FAX : +81-3-5632-9618  
URL : <http://www.cosmobio.co.jp/>  
e-mail : [export@cosmobio.co.jp](mailto:export@cosmobio.co.jp)

### Manufacturer

 TransGenic Inc.

7-1-6 Minatojimaminami-machi,  
Chuo-ku, Kobe, 650-0047 JAPAN  
TEL : +81-78-306-0590  
FAX : +81-78-306-0589  
URL : <http://www.transgenic.co.jp/>  
e-mail : [techstaff@transgenic.co.jp](mailto:techstaff@transgenic.co.jp)