



Code No.KAL-KM109-EX

For research use only

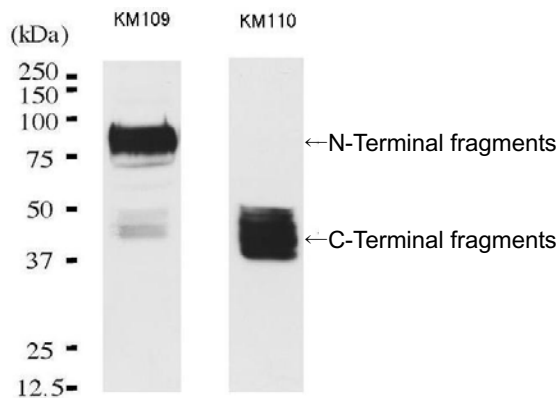
## Anti SulFP2/sulf-2 Polyclonal Antibody

We supply two antibodies which react with rat SulFP2.

KM109: Specifically reacts with the N-terminal domains of rat SulFP2

KM110: Specifically reacts with the C-terminal domains of rat SulFP2

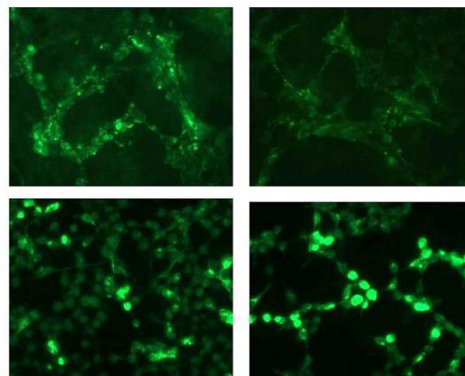
Package Size	25 $\mu$ g (100 $\mu$ L/vial)
Format	Rabbit polyclonal antibody 0.25mg/mL
Buffer	PBS [containing 50% Block Ace as a stabilizer, 0.1%Proclin as a bacteroopstat]
Storage	Store below $-20^{\circ}\text{C}$ Once thawed, store at $4^{\circ}\text{C}$ . Repeated freeze-thaw cycles should be avoided.
Purification method	This antibody was established from the serum of the rabbit immunized with N-terminal domain of rat SulFP2, expressed as a recombinant protein in E. coli , and purified by Protein G affinity chromatography.
Working dilution	For Western blotting : 1.0 $\mu$ g/ml For Immnocytochemistry : 8.0 $\mu$ g/ml



### Western blotting

Sample : SulFP2-transfected HEK293 cells supernatants

KM109 KM110



### Immunocytochemistry

Sample : SulFP2-transfected HEK293 cells

Preparation of antibodies and instruction :

Masu M.

Nagamine S.

University of Tsukuba

Graduate School of Comprehensive Human Sciences

Cell surface staining

Intracellular staining



Code No.KAL-KM109-EX

## Anti SulfFP2/sulf-2 Polyclonal Antibody

### 【Reference】

1. Nagamine S. et al. :  
Expression of a heparan sulfate remodeling enzyme, heparan sulfate 6-O-endosulfatase sulfatase FP2, in the rat nervous system.  
Brain Res Dev Brain Res. 2005 Oct 6;159(2):135-43.
2. Morimoto-Tomita M. et al. :  
Cloning and characterization of two extracellular heparin-degrading endosulfatases in mice and humans.  
J Biol Chem. 2002 Dec 20;277(51):49175-85.
3. Ai X. et al. :  
Substrate Specificity and Domain Functions of Extracellular Heparan Sulfate 6-O-Endosulfatases, QSulf1 and QSulf2.  
J Biol Chem. 2006 Feb 24;281(8):4969-76.

#### Distributor



COSMO BIO Co., LTD.  
Inspiration for Life Science

TOYO EKIMAE BLDG. 2-20, TOYO 2CHOME  
KOTO-KU, TOKYO 135-0016, JAPAN  
TEL : +81-3-5632-9617  
FAX : +81-3-5632-9618  
URL : <http://www.cosmobio.co.jp/>  
e-mail : [export@cosmobio.co.jp](mailto:export@cosmobio.co.jp)

#### Manufacturer



TransGenic Inc.

7-1-6 Minatojimaminami-machi,  
Chuo-ku, Kobe,650-0047 JAPAN  
TEL : +81-78-306-0590  
FAX : +81-78-306-0589  
URL : <http://www.transgenic.co.jp/>  
e-mail : [techstaff@transgenic.co.jp](mailto:techstaff@transgenic.co.jp)