



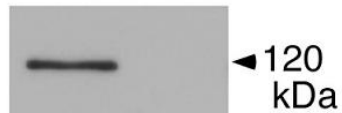
Code No.KAL-KM106-EX

For research use only

## Anti Autotaxin/ENPP2 Polyclonal Antibody

Package Size	25 $\mu$ g (250 $\mu$ L/vial)
Format	Rabbit polyclonal antibody 0.1mg/mL
Buffer	PBS [containing 50% Block Ace as a stabilizer, 0.1%Proclin as a bacteroopstat]
Storage	Store below $-20^{\circ}\text{C}$ Once thawed, store at $4^{\circ}\text{C}$ . Repeated freeze-thaw cycles should be avoided.
Purification method	This antibody was established from the serum of the rabbit immunized with N-terminal domain of Autotaxin, and purified by peptide affinity chromatography.
Working dilution	For Western blotting :0.5 $\mu$ g/ml

(1) (2)



### Western blotting

Sample : Conditioned medium from COS7 cells

(1) Autotaxin-trasfected cells

(2) Nagative control cells

Preparation of antibodies and instruction :

Masu M.

Koike S.

University of Tsukuba

Graduate School of Comprehensive Human Sciences



Code No.KAL-KM106-EX

## Anti Autotaxin/ENPP2 Polyclonal Antibody

### 【Reference】

1. Koike S. et al. :  
The N-terminal hydrophobic sequence of autotaxin (ENPP2) functions as a signal peptide.  
Genes Cells. 2006 Feb;11(2):133-42.
2. Sato K. et al. :  
Identification of autotaxin as a neurite retraction-inducing factor of PC12 cells in cerebrospinal fluid and its possible sources.  
J Neurochem. 2005 Feb;92(4):904-14.
3. Tanaka M. et al. :  
Prostatic acid phosphatase degrades lysophosphatidic acid in seminal plasma.  
FEBS Lett. 2004 Jul 30;571(1-3):197-204.
4. Stefan C. et al. :  
NPP-type ectophosphodiesterases: unity in diversity.  
Trends Biochem Sci. 2005 Oct;30(10):542-50.

#### Distributor



COSMO BIO Co., LTD.  
Inspiration for Life Science

TOYO EKIMAE BLDG. 2-20, TOYO 2CHOME  
KOTO-KU, TOKYO 135-0016, JAPAN  
TEL : +81-3-5632-9617  
FAX : +81-3-5632-9618  
URL : <http://www.cosmobio.co.jp/>  
e-mail : [export@cosmobio.co.jp](mailto:export@cosmobio.co.jp)

#### Manufacturer



Trans Genic Inc.

7-1-6 Minatojiminami-machi,  
Chuo-ku, Kobe,650-0047 JAPAN  
TEL : +81-78-306-0590  
FAX : +81-78-306-0589  
URL : <http://www.transgenic.co.jp/>  
e-mail : [techstaff@transgenic.co.jp](mailto:techstaff@transgenic.co.jp)