



Code No. KAL-KK053-EX

For research use only

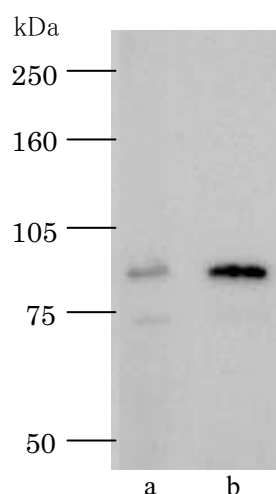
Anti MEF Polyclonal antibody, Rabbit

The ETS transcription factor family plays a key role in cell growth and differentiation, especially in several malignant and genetic disorders. Recently, it has discovered that MEF (Myeloid ELF-1-like Factor) may compete with ETS-2 for binding to the ets-binding sites on the promoters of the MMP and IL8 which is involved in tumor malignancy.

So that, MEF is expected as a candidate of tumor suppressor. In addition, not like another tumor suppression factor such as p53, MEF is a novel tumor suppressor gene that is located on the X chromosome.

This antibody is very useful for analyzing the MEF expression level in the cell.

Package Size	10 μ g (100 μ L/vial)
Format	Rabbit polyclonal antibody, 0.1mg/mL
Buffer	Block Ace as a stabilizer, containing 0.1% Proclin as a bacteriostat
Storage	Below -20°C until needed.
Purification method	This antibody was purified from rabbit serum by affinity chromatography.
Working dilution	For western blotting ; 0.2~1.0 μ g/mL



Western blotting

Sample (cell lysate): a Human normal cell (HEK293)
b MEF overexpression A549 cell

Preparation of antibodies and instruction

Dr.Hirofumi Kai at Department of Molecular Medicine,
Graduate School of Pharmaceutical Sciences, Kumamoto
University.



Anti MEF polyclonal antibody, Rabbit

【Reference】

1. Seki Y, Suico MA, Uto A, Hisatsune A, Shuto T, Isohama Y, Kai H. :The ETS transcription factor MEF is a candidate tumor suppressor gene on the X chromosome. *Cancer Res.* 2002 Nov 15; 62(22):6579-86.
2. Suico MA, Koyanagi T, Ise S, Lu Z, Hisatsune A, Seki Y, Shuto T, Isohama Y, Miyata T, Kai H. :Functional dissection of the ETS transcription factor MEF. *Biochim Biophys Acta.* 2002 Aug 19;1577(1):113-20.
3. Hisatsune A, Uto A, Koyanagi T, Chihara T, Miyata T, Basbaum C, Kai H. : [Novel transcription factor MEF is associated with the function of lung epithelial cells] *Nippon Yakurigaku Zasshi.* 1999 Oct;114 Suppl 1:81P-85P. Japanese.
4. Kai H, Hisatsune A, Chihara T, Uto A, Kokusho A, Miyata T, Basbaum C.: Myeloid ELF-1-like factor up-regulates lysozyme transcription in epithelial cells. *J Biol Chem.* 1999 Jul 16;274(29):20098-102.

Distributor



COSMO BIO Co., LTD.
Inspiration for Life Science

TOYO EKIMAE BLDG. 2-20, TOYO 2CHOME
KOTO-KU, TOKYO 135-0016, JAPAN
TEL : +81-3-5632-9617
FAX : +81-3-5632-9618
URL : <http://www.cosmobio.co.jp/>
e-mail : export@cosmobio.co.jp

Manufacturer

 TransGenic Inc.

7-1-6 Minatojimmaminami-machi,
Chuo-ku, Kobe,650-0047 JAPAN
TEL : +81-78-306-0590
FAX : +81-78-306-0589
URL : <http://www.transgenic.co.jp/>
e-mail : techstaff@transgenic.co.jp