



Code No.KAL-KH043-EX

For research use only

Anti-3-DG-imidazolone monoclonal antibody

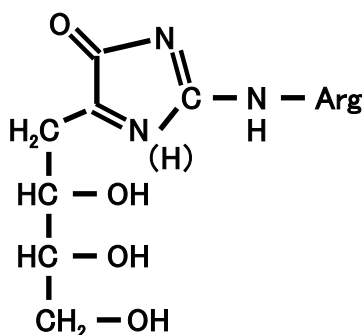
(Clone No. JNH-27)

It has been shown that Advanced Glycation End products (AGE) have been involved in chronic disease with aging, such as diabetes or brain disease. So far, several AGE structure has been identified, and these studies shed light on the important role of the growth of the disease. Imidazolone is one of AGE structure, and has been shown that there are two pathways to generate. One is through 3-deoxyglucosone (3-DG) and another is through methylglyoxal. But it is not clear which pathway is dominant in each chronic disease.

This antibody is very useful for analyzing the involvement of imidazolone in the chronic disease.

Package Size	50 μ g (200 μ L/vial)
Format	Mouse monoclonal antibody 0.25 mg/mL
Buffer	Block Ace as a stabilizer, containing 0.1% Proclin as a bacteriostat
Storage	Store below -20°C Once thawed, store at 4°C . Repeated freeze-thaw cycles should be avoided.
Clone No.	JNH-27
Subclass	IgG1
Purification method	The splenic lymphocytes from BALB/c mouse, immunized with Imidazolone-HAS were fused to myeloma P3U1 cells. The cell line (JNH-27) with positive reaction was grown in ascitic fluid of BALB/c mouse, from which the antibody was purified by Protein G affinity chromatography.

Working dilution for immunohistochemistry: about 7 μ g/mL



3-DG derived imidazolone



Anti-3-DG-imidazolone monoclonal antibody

(Clone No. JNH-27)

【Reference】

- 1 . Noriyuki Shibata et al., Acta Neuropathol Vol.100. 275-284 (2000)

Distributor



COSMO BIO Co., LTD.
Inspiration for Life Science

TOYO EKIMAE BLDG. 2-20, TOYO 2CHOME
KOTO-KU, TOKYO 135-0016, JAPAN
TEL : +81-3-5632-9617
FAX : +81-3-5632-9618
URL : <http://www.cosmobio.co.jp/>
e-mail : export@cosmobio.co.jp

Manufacturer

 Trans Genic Inc.

7-1-6 Minatojimaminami-machi,
Chuo-ku, Kobe,650-0047 JAPAN
TEL : +81-78-306-0590
FAX : +81-78-306-0589
URL : <http://www.transgenic.co.jp/>
e-mail : techstaff@transgenic.co.jp