



Code No. KAL-KH006-EX

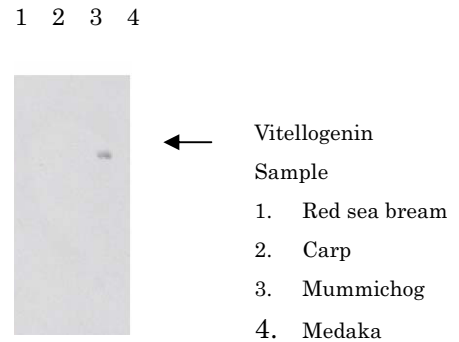
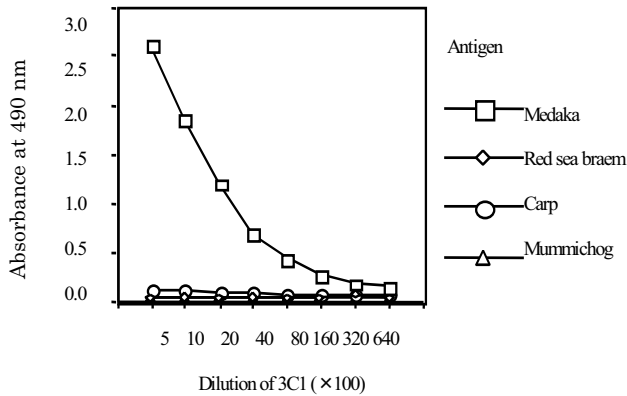
For research use only

## Mouse Anti Medaka Vitellogenin Monoclonal Antibody

(Clone No 3C1)

Package Size	100 $\mu$ g(100 $\mu$ L/vial)
Format	Mouse monoclonal antibody 1.0mg/mL
Buffer	10mM sodium phosphate , 0.15M sodium chloride , 1%BSA , pH7.4
Storage	Store below $-20^{\circ}\text{C}$ . Once thawed, store at $4^{\circ}\text{C}$ . Repeated freeze-thaw cycles should be avoided.
Clone No.	3C1
Subclass	IgG1
Immunogen source	Medaka vitellogenin purified from $17\beta$ -estradiol treated serum and ascite.
Working dilution	Immunoblotting 0.01~0.1 $\mu$ g/mL ; ELISA 0.1 ~ 0.5 $\mu$ g/mL (Fixed quantity system by ELISA has not been established.)
pecificity	<cross reactivity>

	Medaka	Red sea bream	Carp	mummichog
ELISA	(+)	(-)	(-)	(-)
Immunoblotting	(+)	(-)	(-)	(-)



### ELISA

#### Antigen:

Medaka vitellogenin was purified from female serum. Red sea bream and mummichog vitellogenins were purified from male fish induced with  $17\beta$ -estradiol. Each antigen were diluted to  $5\mu\text{g/mL}$  and added to microtiter plate  
Primary antibody (3C1) Purified monoclonal antibody

### IMMUNOBLOTTING

Sample Plasma(dilution 1:40) from female fish (carp) or male fish induced with  $17\beta$ -estradiol (red sea bream, mummichog and medaka).

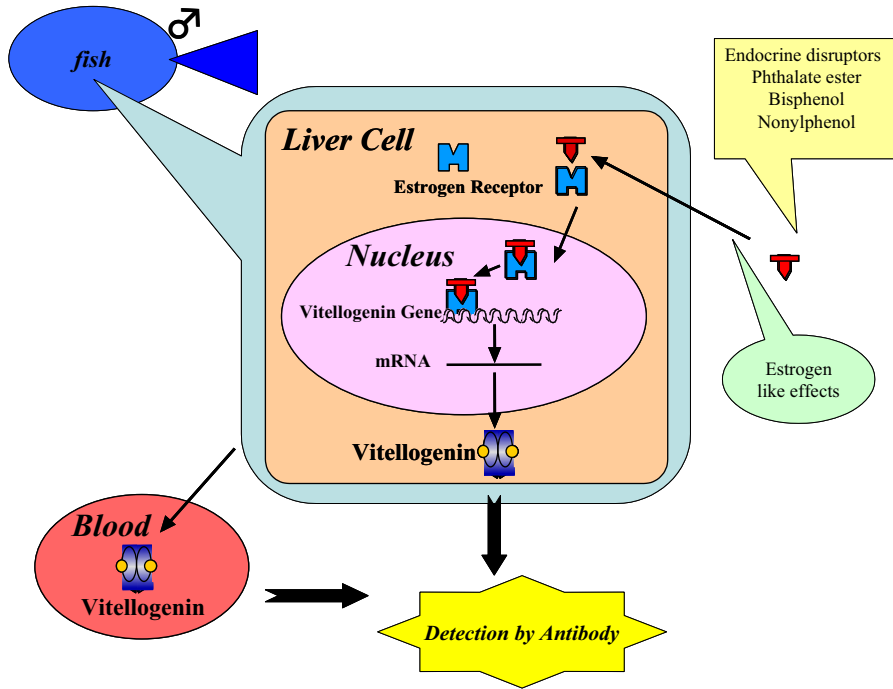
Primary antibody3C1 diluted  $1:10^5$



For research use only

## Mouse Anti Medaka Vitellogenin Monoclonal Antibody

(Clone No3C1)



### 【References】

- 1).N.Hiramastu, M.Shimizu, H.Fukada, M.Kitamura, K.Ura, H.Fuda, and A.Hara, (1997) *Comp. Biochem Physiol.* 118C(2) 149-157
- 2).N.Hiramatsu and A.Hara. (1996) *Comp Biochem Physiol.* 115A(3) 243-251
- 3).H.Okumura, A.Hara, F.Saeki, T.Todo, S.Adachi and K.Yamauchi,(1995) *Fisheries Science* , 61(2) 283-289
- 4).T.Matsubara, T.Wada and A.Hara, (1994) *Comp Biochem Physiol.* 109B(4) 545-555
- 5).Y.Tao, A,Hara, R.. G. Hodoson, L. C. Woods III and C. V. Sullivan, (1993) *Fish Physiol. Biochem.* 12(1) 31-46
- 6) A.Hara, C. V. Sullivan and W.W. Dickhoff,(1993) *Zool. Sci.*, 10(2), 245-256

### Distributor



COSMO BIO CO., LTD.  
Inspiration for Life Science

TOYO EKIMAE BLDG. 2-20, TOYO 2CHOME  
KOTO-KU, TOKYO 135-0016, JAPAN  
TEL : +81-3-5632-9617  
FAX : +81-3-5632-9618  
URL : <http://www.cosmobio.co.jp/>  
e-mail : [export@cosmobio.co.jp](mailto:export@cosmobio.co.jp)

### Manufacturer

TransGenic Inc.

7-1-6 Minatojiminami-machi,  
Chuo-ku, Kobe,650-0047 JAPAN  
TEL : +81-78-306-0590  
FAX : +81-78-306-0589  
URL : <http://www.transgenic.co.jp/>  
e-mail : [techstaff@transgenic.co.jp](mailto:techstaff@transgenic.co.jp)