



Code No. KAL-KH005-EX

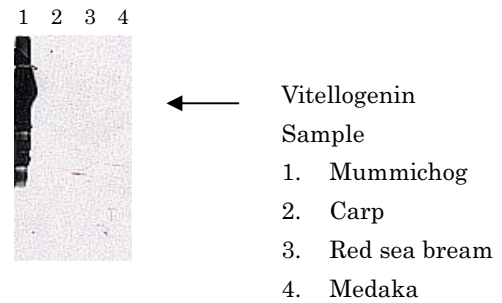
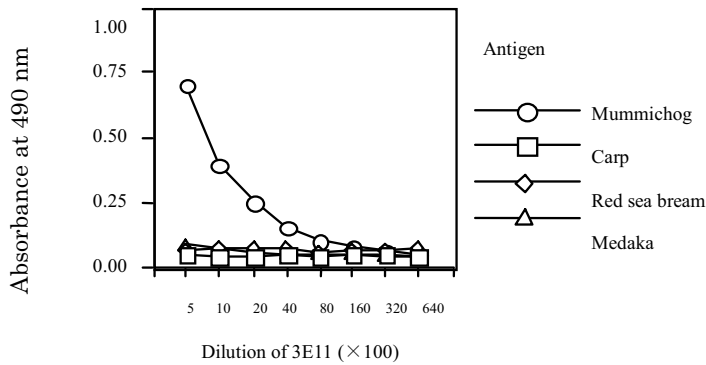
For research use only

Mouse Anti Mummichog Vitellogenin Monoclonal Antibody

(Clone No. 3E11)

Package Size	100 μ g(100 μ l/vial)
Format	Mouse monoclonal antibody 1.0mg/ml
Buffer	10mM sodium phosphate , 0.15M sodium chloride , 1%BSA , pH7.4
Storage	Store below -20°C . Once thawed, store at 4°C . Repeated freeze-thaw cycles should be avoided.
Clone No.	3E11
Subclass	IgG1
Immunogen source	Mummichog vitellogenin purified from serum of 17β -estradiol induced fish
Working dilution	Immunoblotting 1 μ g/ml ELISA 1~2 μ g/ml(Fixed quantity system by ELISA has not been established.)
Specificity	<cross reactivity>

	Mummichog	Carp	Red sea bream	Medaka
ELISA	(+)	(-)	(-)	(-)
Immunoblotting	(+)	(-)	(-)	(-)



ELISA

Antigen:

Carp vitellogenin was purified from female fish serum. Red sea bream, mummichog and medaka vitellogenins were purified from male fish induced with 17β -estradiol. Each antigen was diluted to 1 μ g/mL and added to microtiter plate.

Primary antibody:

Purified monoclonal antibody(3E11)

IMMUNOBLOTTING

Sample :

Plasma(dilution 1:40)from female fish (carp) or male fish induced with 17β -estradiol(red sea bream, mummichog and medaka)

Primary antibody:

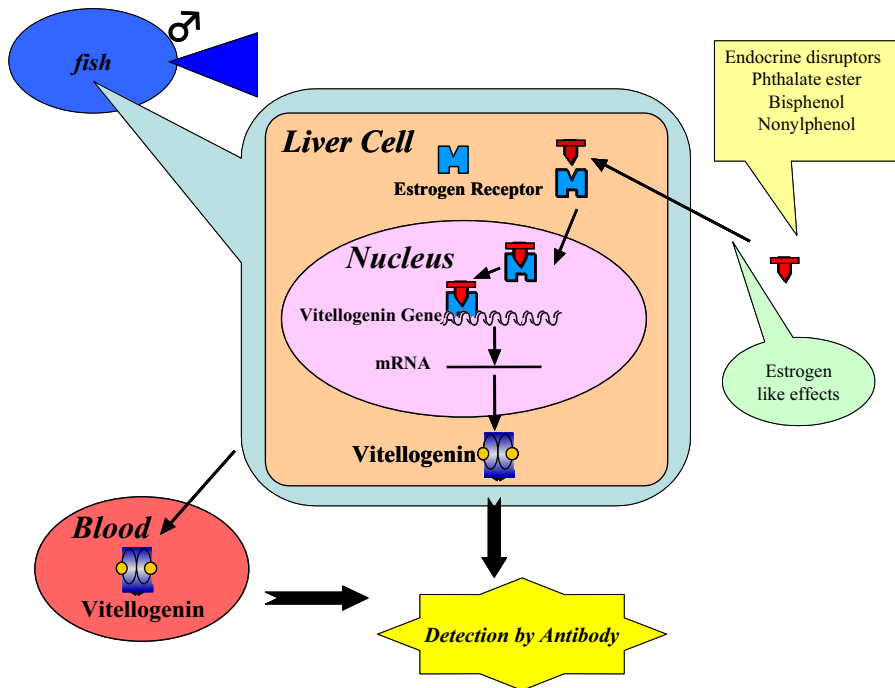
3E11 diluted 1:1000



For research use only

Mouse Anti Mummichog Vitellogenin Monoclonal Antibody

(Clone No. 3E11)



【References】

- 1).N.Hiramastu, M.Shimizu, H.Fukada, M.Kitamura, K.Ura, H.Fuda, and A.Hara, (1997) *Comp. Biochem Physiol.* 118C(2) 149-157
- 2).N.Hiramatsu and A.Hara. (1996) *Comp Biochem Physiol.* 115A(3) 243-251
- 3).H.Okumura, A.Hara, F.Saeki, T.Todo, S.Adachi and K.Yamauchi,(1995) *Fisheries Science* , 61(2) 283-289
- 4).T.Matsubara, T.Wada and A.Hara, (1994) *Comp Biochem Physiol.* 109B(4) 545-555
- 5).Y.Tao, A.Hara, R.. G. Hodoson, L. C. Woods III and C. V. Sullivan, (1993) *Fish Physiol. Biochem*, 12(1) 31-46
- 6) A.Hara, C. V. Sullivan and W.W. Dickhoff,(1993) *Zool . Sci.*, 10(2), 245-256

Distributor



COSMO BIO Co., LTD.
Inspiration for Life Science

TOYO EKIMAE BLDG. 2-20, TOYO 2CHOME
KOTO-KU, TOKYO 135-0016, JAPAN
TEL : +81-3-5632-9617
FAX : +81-3-5632-9618
URL : <http://www.cosmobio.co.jp/>
e-mail : export@cosmobio.co.jp

Manufacturer



7-1-6 Minatojiminami-machi,
Chuo-ku, Kobe,650-0047 JAPAN
TEL : +81-78-306-0590
FAX : +81-78-306-0589
URL : <http://www.transgenic.co.jp/>
e-mail : techstaff@transgenic.co.jp