



Code No. KAL-KE030-EX

For research use only

## Anti Rat Related to $b^{0,+}$ Amino Acid Transporter (rBAT) Polyclonal Antibody, Rabbit

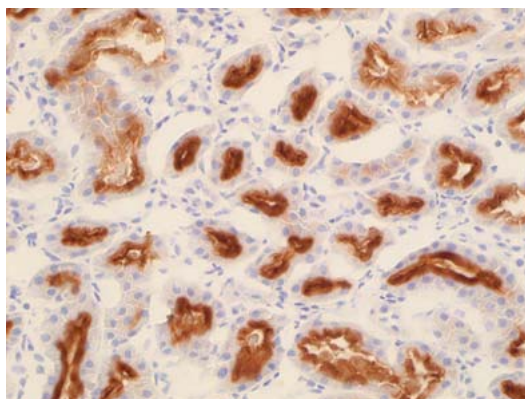
Mammalian amino acid transport system is consisted of large variety of transporters with the reflection of amino acid molecule variety, and is classified into various transport systems by the transportative substrate selectivity and the  $Na^+$  dependence with the reflection of amino acid molecule variety.

Related to  $b^{0,+}$  amino acid transporter (rBAT) is identified amino acid transporter that is associated with the cystinuria-related type II membrane glycoprotein. It induces  $Na^+$ -independent transport of cystine as well as basic and neutral amino acids with the properties of  $b^{0,+}$  amino acid transporter 1 (BAT1). rBAT1 was found to be related to the genetic disease cystinuria, in which defects in amino acid reabsorption in the renal proximal tubules lead to urinary loss of cystine and basic amino acids. The BAT1 and rBAT proteins were shown to be colocalized in the apical membrane of the renal proximal tubules where massive cystine transport had been proposed, and BAT1 is associated with rBAT to express its function.

This antibody has been proved to be useful for immunohistochemistry and immunoblotting.

Package Size	25 $\mu$ g (250 $\mu$ L / vial)
Format	Rabbit polyclonal antibody 0.1mg/ml
Buffer	Block Ace as a stabilizer, containing 0.1%Proclin as bacteriostat
Storage	Store below -20°C Once thawed, store at 4°C. Repeated freeze-thaw cycles should be avoided.
Purification method	This antibody was purified from rabbit serum immunized with synthesized peptide of rat rBAT by peptide affinity chromatography.
Working dilution for immunohistochemistry:	0.1 - 0.5 $\mu$ g/mL, for immunoblotting: 0.01-0.1 $\mu$ g/mL
HGNC Name	SLC3A1(Solute Carrier family 3A1)

※HGNC: Human Gene Nomenclature Committee

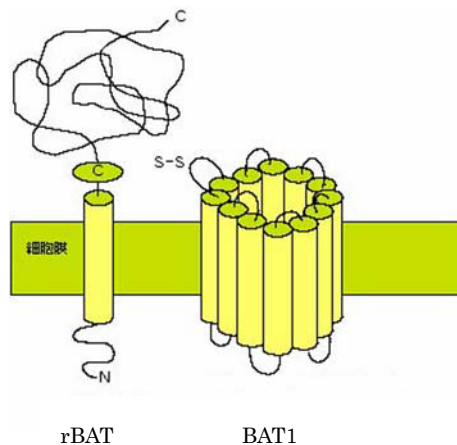


Rat Kidney (frozen section)

Luminal side of renal tubule are positively stained.



## Anti Rat Related to b<sup>0,+</sup> Amino Acid Transporter (rBAT) Polyclonal Antibody, Rabbit



rBAT                      BAT1  
**Heterodimeric      Complex**

### 【Reference】

1. Chairoungdua A., Segawa H., Kim J.Y., Miyamoto K., Haga H., Fukui Y., Mizoguchi K., Ito H., Takeda E., Endou H. and Kanai Y.: Identification of an Amino Acid Transporter Associated with the Cystinuria -related Type II Membrane Glycoprotein. *J.Biol.Chem.* 274 (41) 28845-28848,1999
2. Mizoguchi K., Cha S.H., Chairoungdua A., Kim D.K., Shigeta Y., Matsuo H., Fukushima J., Awa Y., Akakura K., Goya T., Ito H., Endou H. and Kanai Y.: Human cystinuria-related transporter :Localization and functional characterization. *Kidney Int.* 59.1821-1833, 2001

### Distributor



COSMO BIO Co., LTD.  
Inspiration for Life Science

TOYO EKIMAE BLDG. 2-20, TOYO 2CHOME  
KOTO-KU, TOKYO 135-0016, JAPAN  
TEL : +81-3-5632-9617  
FAX : +81-3-5632-9618  
URL : <http://www.cosmobio.co.jp/>  
e-mail : [export@cosmobio.co.jp](mailto:export@cosmobio.co.jp)

### Manufacturer

Trans Genic Inc.

7-1-6 Minatojiminami-machi,  
Chuo-ku, Kobe, 650-0047 JAPAN  
TEL : +81-78-306-0590  
FAX : +81-78-306-0589  
URL : <http://www.transgenic.co.jp/>  
e-mail : [techstaff@transgenic.co.jp](mailto:techstaff@transgenic.co.jp)