



KAL-KB524

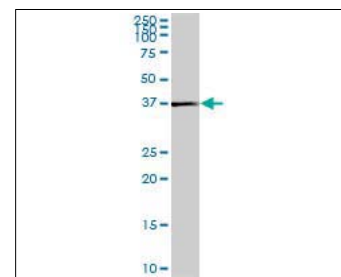
For research use only

Anti Human KCTD15 Polyclonal Antibody

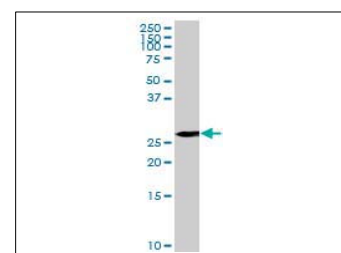
Code No. KB524
Target KCTD15
Category Transporter
Gene ID 79047
Primary Source HGNC:23297
Synonyms MGC2628; MGC25497; KCTD15

Type Polyclonal Antibody
Immunogen Recombinant protein of full length Human KCTD15

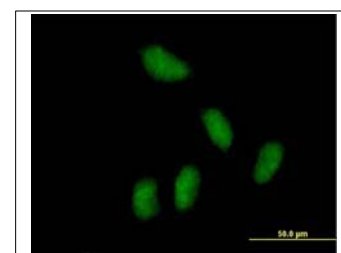
Raised in Mouse
Myeloma -
Clone number -
Purification Protein A purified
Source Mouse Serum
Isotype -
Cross Reactivity Rat
Label Unlabeled
Concentration 1 mg/mL
Contents (Volume) 50 µg
Buffer PBS, pH 7.2



[WB] rat brain tissue lysate



[WB] KCTD15 transfected 293T cell lysate



[IF] HeLa cell

Storage Store at - 20 °C long term, store at 4 °C short term. Avoid repeated freeze-thaw cycles.

Application WB,IF

ELISA	WB	IHC	ICC
-	1.0	-	-
IP	FCM	IF	Neutralization
-	-	10	-

(µg/mL)

Reference

- Ota T., et al. "Complete sequencing and characterization of 21,243 full-length human cDNAs." Nat. Genet. 36:40-45(2004)
- The MGC Project Team. "The status, quality, and expansion of the NIH full-length cDNA project: the Mammalian Gene Collection (MGC)." Genome Res. 14:2121-2127(2004)
- Ballif B.A., et al. "Phosphoproteomic analysis of the developing mouse brain." Mol. Cell. Proteomics 3:1093-1101(2004)

UniProt Summary

//Sequence similarities: Contains 1 BTB (POZ) domain.

Manufactured by TransGenic Inc.



COSMO BIO CO., LTD.
Inspiration for Life Science

TOYO 2CHOME, KOTO-KU, TOKYO, 135-0016, JAPAN

<http://www.cosmobio.co.jp> e-mail : export@cosmobio.co.jp

Phone : +81-3-5632-9617 FAX : +81-3-5632-9618