



KAL-KB513

For research use only

Anti Human CACNB3 Polyclonal Antibody

Code No. KB513
Target CACNB3
Category Transporter
Gene ID 784
Primary Source HGNC:1403
Synonyms CACNLB3; CACNB3

Type Polyclonal Antibody
Immunogen Recombinant protein of full length Human CACNB3

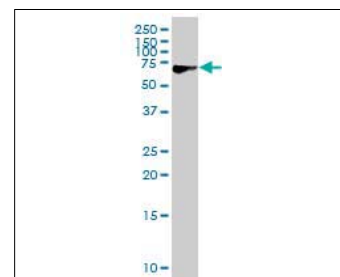
Raised in Mouse
Myeloma -
Clone number -
Purification Protein A purified
Source Mouse Serum
Isotype -
Cross Reactivity -
Label Unlabeled
Concentration 0.5 mg/mL
Contents (Volume) 50 µg
Buffer PBS, pH 7.2

Storage Store at - 20 °C long term, store at 4 °C short term. Avoid repeated freeze-thaw cycles.

Application WB

ELISA	WB	IHC	ICC
-	1.0	-	-
IP	FCM	IF	Neutralization
-	-	-	-

(µg/mL)



[WB] CACNB3 transfected 293T cell lysate

Reference

1. Yamada Y., et al. "The structures of the human calcium channel alpha 1 subunit (CACNL1A2) and beta subunit (CACNLB3) genes." Genomics 27:312-319(1995)
2. Collin T., et al. "Cloning, chromosomal location and functional expression of the human voltage-dependent calcium-channel beta 3 subunit." Eur. J. Biochem. 220:257-262(1994)
3. The MGC Project Team. "The status, quality, and expansion of the NIH full-length cDNA project: the Mammalian Gene Collection (MGC)." Genome Res. 14:2121-2127(2004)

UniProt Summary

//Function: The beta subunit of voltage-dependent calcium channels contributes to the function of the calcium channel by increasing peak calcium current, shifting the voltage dependencies of activation and inactivation, modulating G protein inhibition and controlling the alpha-1 subunit membrane targeting.

//Tissue specificity: Expressed mostly in brain, smooth muscle and ovary.

//Sequence similarities: Belongs to the calcium channel beta subunit family. Contains 1 SH3 domain.

Manufactured by TransGenic Inc.



COSMO BIO CO., LTD.
Inspiration for Life Science

TOYO 2CHOME, KOTO-KU, TOKYO, 135-0016, JAPAN

http://www.cosmobio.co.jp e-mail : export@cosmobio.co.jp

Phone : +81-3-5632-9617 FAX : +81-3-5632-9618