



KAL-KB510

For research use only

Anti Human P2RY8 Polyclonal Antibody

Code No. KB510
Target P2RY8
Category GPCR
Gene ID 286530
Primary Source HGNC:15524
Synonyms P2Y8; MGC50878; P2RY8

Type Polyclonal Antibody
Immunogen Recombinant protein of full length Human P2RY8

Raised in Mouse
Myeloma -
Clone number -
Purification Protein A purified
Source Mouse Serum

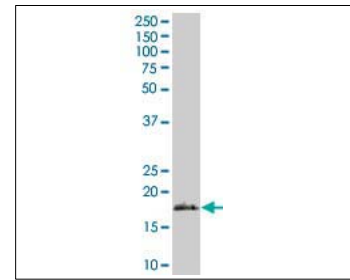
Isotype -
Cross Reactivity -
Label Unlabeled
Concentration 1 mg/mL
Contents (Volume) 50 µg
Buffer PBS, pH 7.2

Storage Store at - 20 °C long term, store at 4 °C short term. Avoid repeated freeze-thaw cycles.

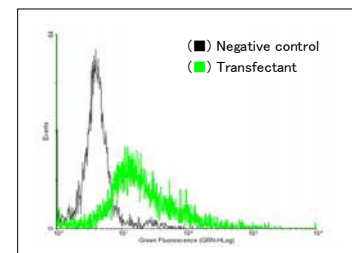
Application WB,FCM

	ELISA	WB	IHC	ICC
	-	1.0	-	-
	IP	FCM	IF	Neutralization
	-	1.0	-	-

(µg/mL)



[WB] P2RY8 transfected 293T cell lysate



[FCM] P2RY8 expressing 293 cells

Reference

- Ross M.T., et al. "The DNA sequence of the human X chromosome." *Nature* 434:325-337(2005)
- The MGC Project Team. "The status, quality, and expansion of the NIH full-length cDNA project: the Mammalian Gene Collection (MGC)." *Genome Res.* 14:2121-2127(2004)
- Adrian K., et al. "Expression of purinergic receptors (ionotropic P2X1-7 and metabotropic P2Y1-11) during myeloid differentiation of HL60 cells." *Biochim. Biophys. Acta* 1492:127-138(2000)

UniPlot Summary

//Function: Probable receptor for purines coupled to G-proteins.

//Subcellular location: Cell membrane; Multi-pass membrane protein.

//Tissue specificity: Barely detectable in normal blood leukocytes. Weaker expression was seen in heart, kidney and lung. Not detected in brain.

//Sequence similarities: Belongs to the G-protein coupled receptor 1 family.

Manufactured by TransGenic Inc.



COSMO BIO CO., LTD.
Inspiration for Life Science

TOYO 2CHOME, KOTO-KU, TOKYO, 135-0016, JAPAN

http://www.cosmobio.co.jp e-mail : export@cosmobio.co.jp

Phone : +81-3-5632-9617 FAX : +81-3-5632-9618