



KAL-KB509

For research use only

Anti Human OXER1 Polyclonal Antibody

Code No. KB509
Target OXER1
Category GPCR
Gene ID 165140
Primary Source HGNC:24884
Synonyms GPCR; GPR170; TG1019; OXER1

Type Polyclonal Antibody
Immunogen Recombinant protein of full length Human OXER1

Raised in Mouse
Myeloma -
Clone number -
Purification Protein A purified
Source Mouse Serum

Isotype -
Cross Reactivity -

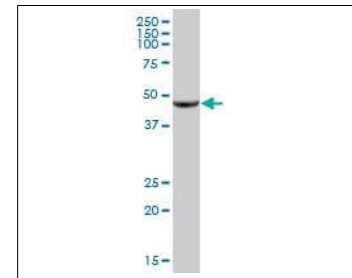
Label Unlabeled
Concentration 1 mg/mL
Contents (Volume) 50 µg
Buffer PBS, pH 7.2

Storage Store at - 20 °C long term, store at 4 °C short term. Avoid repeated freeze-thaw cycles.

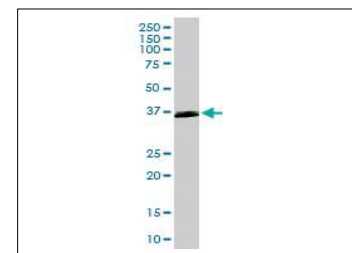
Application WB

	ELISA	WB	IHC	ICC
	-	1.0	-	-
	IP	FCM	IF	Neutralization
	-	-	-	-

(µg/mL)



[WB] human liver tissue lysate



[WB] OXER1 transfected 293T cell lysate

Reference

- Hosoi T., et al. "Identification of a novel human eicosanoid receptor coupled to G(i/o)." J. Biol. Chem. 277:31459-31465(2002)
- Jones C.E., et al. "Expression and characterization of a 5-oxo-6E,8Z,11Z,14Z-eicosatetraenoic acid receptor highly expressed on human eosinophils and neutrophils." Mol. Pharmacol. 63:471-477(2003)
- Takeda S., et al. "Identification of G protein-coupled receptor genes from the human genome sequence." FEBS Lett. 520:97-101(2002)

UniPlot Summary

//Function: Receptor for eicosanoids and polyunsaturated fatty acids such as 5-oxo-6E,8Z,11Z,14Z-eicosatetraenoic acid (5-OXO-ETE), 5(S)-hydroperoxy-6E,8Z,11Z,14Z-eicosatetraenoic acid (5(S)-HPETE) and arachidonic acid. Seems to be coupled to the G(i)/G(o), families of heteromeric G proteins.

//Subcellular location: Cell membrane; Multi-pass membrane protein.

//Tissue specificity: Expressed in various tissues except brain. Expression is more intense in liver, kidney, peripheral leukocyte, lung, and spleen than in other tissues. Highly expressed in eosinophils, neutrophils, and lung macrophages.

//Sequence similarities: Belongs to the G-protein coupled receptor 1 family.

Manufactured by TransGenic Inc.



COSMO BIO CO., LTD.
Inspiration for Life Science

TOYO 2CHOME, KOTO-KU, TOKYO, 135-0016, JAPAN

http://www.cosmobio.co.jp e-mail : export@cosmobio.co.jp

Phone : +81-3-5632-9617 FAX : +81-3-5632-9618