



KAL-KB508

For research use only

Anti Human GPR151 Polyclonal Antibody

Code No. KB508
Target GPR151
Category GPCR
Gene ID 134391
Primary Source HGNC:23624
Synonyms GPCR; PGR7; GALR4; GALRL; GPR151

Type Polyclonal Antibody
Immunogen Recombinant protein of full length Human GPR151

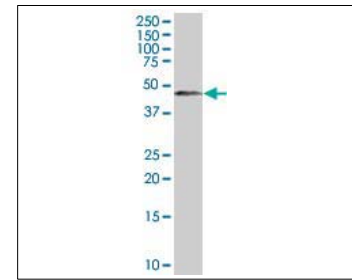
Raised in Mouse
Myeloma -
Clone number -
Purification Protein A purified
Source Mouse Serum
Isotype -
Cross Reactivity -
Label Unlabeled
Concentration 0.5 mg/mL
Contents (Volume) 50 µg
Buffer PBS, pH 7.2

Storage Store at - 20 °C long term, store at 4 °C short term. Avoid repeated freeze-thaw cycles.

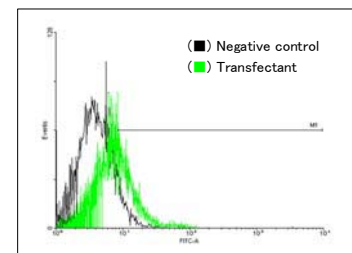
Application WB,FCM

	ELISA	WB	IHC	ICC
	-	1.0	-	-
	IP	FCM	IF	Neutralization
	-	1.0	-	-

(µg/mL)



[WB] GPR151 transfected 293T cell lysate



[FCM] GPR151 expressing 293 cells

Reference

1. Takeda S., et al. "Identification of G protein-coupled receptor genes from the human genome sequence." FEBS Lett. 520:97-101(2002)
2. Vassilatis D.K., et al. "The G protein-coupled receptor repertoires of human and mouse." Proc. Natl. Acad. Sci. U.S.A. 100:4903-4908(2003)
3. Otsuki T., et al. "Signal sequence and keyword trap in silico for selection of full-length human cDNAs encoding secretion or membrane proteins from oligo-capped cDNA libraries." DNA Res. 12:117-126(2005)

UniPlot Summary

//Function: Orphan receptor.

//Subcellular location: Cell membrane; Multi-pass membrane protein.

//Sequence similarities: Belongs to the G-protein coupled receptor 1 family.

Manufactured by TransGenic Inc.



COSMO BIO CO., LTD.
Inspiration for Life Science

TOYO 2CHOME, KOTO-KU, TOKYO, 135-0016, JAPAN

http://www.cosmobio.co.jp e-mail : export@cosmobio.co.jp

Phone : +81-3-5632-9617 FAX : +81-3-5632-9618