



KAL-KB506 For research use only

Anti Human GPRC5D Polyclonal Antibody

Code No. KB506
Target GPRC5D
Category GPCR
Gene ID 55507
Primary Source HGNC:13310
Synonyms MGC129713; MGC129714; GPRC5D

Type Polyclonal Antibody
Immunogen Recombinant protein of full length Human GPRC5D

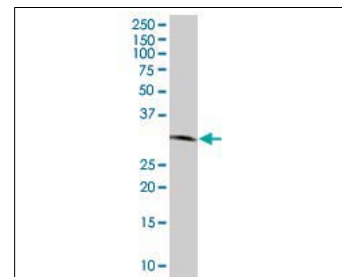
Raised in Mouse
Myeloma -
Clone number -
Purification Protein A purified
Source Mouse Serum
Isotype -
Cross Reactivity -
Label Unlabeled
Concentration 1 mg/mL
Contents (Volume) 50 µg
Buffer PBS, pH 7.2

Storage Store at - 20 °C long term, store at 4 °C short term. Avoid repeated freeze-thaw cycles.

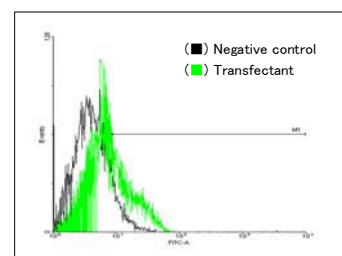
Application WB,FCM

	ELISA	WB	IHC	ICC
	-	1.0	-	-
	IP	FCM	IF	Neutralization
	-	1.0	-	-

(µg/mL)



[WB] GPRC5D transfected 293T cell lysate



[FCM] GPRC5D expressing 293 cells

Reference

1. Braeuner-Osborne H., et al. "Cloning and characterization of a human orphan family C G-protein coupled receptor GPRC5D." *Biochim. Biophys. Acta* 1518:237-248(2001)
2. Takeda S., et al. "Identification of G protein-coupled receptor genes from the human genome sequence." *FEBS Lett.* 520:97-101(2002)
3. The MGC Project Team. "The status, quality, and expansion of the NIH full-length cDNA project: the Mammalian Gene Collection (MGC)." *Genome Res.* 14:2121-2127(2004)

UniPlot Summary

//Subcellular location: Cell membrane; Multi-pass membrane protein.
 //Tissue specificity: Widely expressed in the peripheral system. Expression pattern is high in pancreas, medium in kidney, small intestine, spleen and testis, low in lung, colon, leukocyte, prostate and thymus and not detectable in brain, heart, liver, placenta, skeletal muscle and ovary.
 //Sequence similarities: Belongs to the G-protein coupled receptor 3 family.

Manufactured by TransGenic Inc.

COSMO BIO CO., LTD.
 Inspiration for Life Science

TOYO 2CHOME, KOTO-KU, TOKYO, 135-0016, JAPAN

http://www.cosmobio.co.jp e-mail : export@cosmobio.co.jp

Phone : +81-3-5632-9617 FAX : +81-3-5632-9618