



KAL-KB505

For research use only

Anti Human GPR77 Polyclonal Antibody

Code No. KB505
Target GPR77
Category GPCR
Gene ID 27202
Primary Source HGNC:4527
Synonyms C5L2; GPF77; GPR77

Type Polyclonal Antibody
Immunogen Recombinant protein of full length Human GPR77

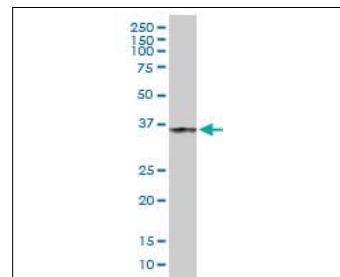
Raised in Mouse
Myeloma -
Clone number -
Purification Protein A purified
Source Mouse Serum
Isotype -
Cross Reactivity -
Label Unlabeled
Concentration 0.5 mg/mL
Contents (Volume) 50 µg
Buffer PBS, pH 7.2

Storage Store at - 20 °C long term, store at 4 °C short term. Avoid repeated freeze-thaw cycles.

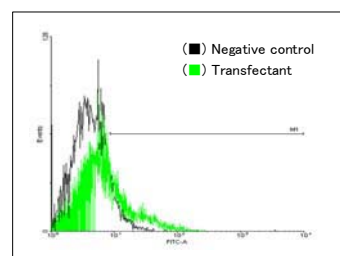
Application WB,FCM

	ELISA	WB	IHC	ICC
	-	1.0	-	-
	IP	FCM	IF	Neutralization
	-	1.0	-	-

(µg/mL)



[WB] GPR77 transfected 293T cell lysate



[FCM] GPR77 expressing 293 cells

Reference

1. Lee D.K., et al. "Identification of four novel human G protein-coupled receptors expressed in the brain." *Brain Res. Mol. Brain Res.* 86:13-22(2001)
2. The MGC Project Team. "The status, quality, and expansion of the NIH full-length cDNA project: the Mammalian Gene Collection (MGC)." *Genome Res.* 14:2121-2127(2004)
3. Cain S.A., et al. "The orphan receptor C5L2 has high affinity binding sites for complement fragments C5a and C5a des Arg(74)." *J. Biol. Chem.* 277:7165-7169(2002)

UniPlot Summary

//Function: Receptor for the chemotactic and inflammatory peptide anaphylatoxin C5a, C4a and C3a and their desarginated derivatives. Couples weakly to Gi-mediated signaling pathways.
//Subcellular location: Cell membrane; Multi-pass membrane protein.
//Tissue specificity: Frontal cortex, hippocampus, hypothalamus, pons and liver.
//Sequence similarities: Belongs to the G-protein coupled receptor 1 family.

Manufactured by TransGenic Inc.



COSMO BIO CO., LTD.
Inspiration for Life Science

TOYO 2CHOME, KOTO-KU, TOKYO, 135-0016, JAPAN
http://www.cosmobio.co.jp e-mail : export@cosmobio.co.jp
Phone : +81-3-5632-9617 FAX : +81-3-5632-9618