

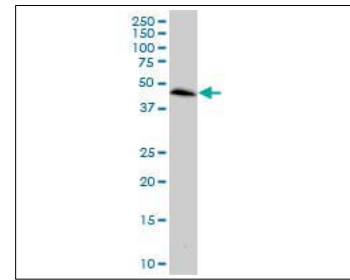


KAL-KB501

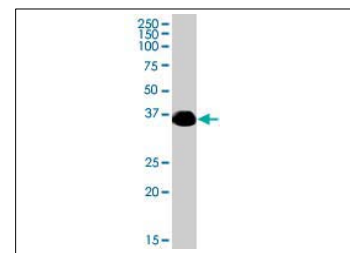
For research use only

Anti Human CCRL2 Polyclonal Antibody

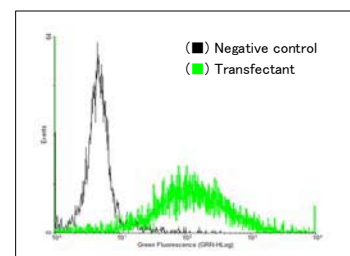
Code No. KB501
Target CCRL2
Category GPCR
Gene ID 9034
Primary Source HGNC:1612
Synonyms HCR; CKRX; CRAM-A; CRAM-B; FLJ55815; MGC34104; MGC116710; CCRL2
Type Polyclonal Antibody
Immunogen Recombinant protein of full length Human CCRL2
Raised in Mouse
Myeloma -
Clone number -
Purification Protein A purified
Source Mouse Serum
Isotype -
Cross Reactivity Mouse
Label Unlabeled
Concentration 0.5 mg/mL
Contents (Volume) 50 µg
Buffer PBS, pH 7.2



[WB] Raw 264.7 cell lysate



[WB] CCRL2 transfected 293T cell lysate



[FCM] CCRL2 expressing 293 cells

Storage Store at - 20 °C long term, store at 4 °C short term. Avoid repeated freeze-thaw cycles.

Application WB,FCM

	ELISA	WB	IHC	ICC
	-	1.0	-	-
	IP	FCM	IF	Neutralization
	-	1.0	-	-

(µg/mL)

Reference

1. Fan P., et al. "Cloning and characterization of a novel human chemokine receptor." Biochem. Biophys. Res. Commun. 243:264-268(1998)

UniPlot Summary

//Function: Receptor for CCL2, CCL5, CCL7 and CCL8.

//Subcellular location: Cell membrane; Multi-pass membrane protein.

//Tissue specificity: Expressed abundantly in immunal tissues such as spleen, fetal liver, lymph node and bone marrow. Strong expression also in lung and heart.

Manufactured by TransGenic Inc.



COSMO BIO CO., LTD.

Inspiration for Life Science

TOYO 2CHOME, KOTO-KU, TOKYO, 135-0016, JAPAN

http://www.cosmobio.co.jp e-mail : export@cosmobio.co.jp

Phone : +81-3-5632-9617 FAX : +81-3-5632-9618