



KAL-KB500

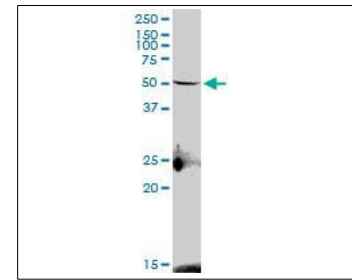
For research use only

Anti Human EDG6 Polyclonal Antibody

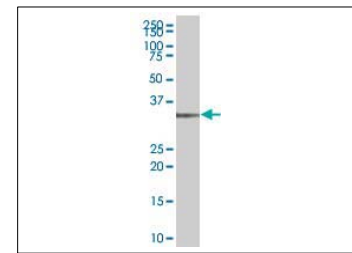
Code No. KB500
Target EDG6
Category GPCR
Gene ID 8698
Primary Source HGNC:3170
Synonyms EDG6; LPC1; S1P4; SLP4; S1PR4

Type Polyclonal Antibody
Immunogen Recombinant protein of full length Human EDG6

Raised in Mouse
Myeloma -
Clone number -
Purification Protein A purified
Source Mouse Serum
Isotype -
Cross Reactivity -
Label Unlabeled
Concentration 1 mg/mL
Contents (Volume) 50 µg
Buffer PBS, pH 7.2



[WB] Jurkat cell lysate



[WB] EDG6 transfected 293T cell lysate

Storage Store at - 20 °C long term, store at 4 °C short term. Avoid repeated freeze-thaw cycles.

Application WB

	ELISA	WB	IHC	ICC
	-	1.0	-	-
	IP	FCM	IF	Neutralization
	-	-	-	-

(µg/mL)

Reference

- Graeler M.H., et al. "EDG6, a novel G protein-coupled receptor related to receptors for bioactive lysophospholipids, is specifically expressed in lymphoid tissue." *Genomics* 53:164-169(1998)
- The MGC Project Team, et al. "The status, quality, and expansion of the NIH full-length cDNA project: the Mammalian Gene Collection (MGC)." *Genome Res.* 14:2121-2127(2004)
- Yamazaki Y., et al. "Edg-6 as a putative sphingosine 1-phosphate receptor coupling to Ca(2+) signaling pathway." *Biochem. Biophys. Res. Commun.* 268:583-589(2000)

UniPlot Summary

//Function: Receptor for the lysosphingolipid sphingosine 1-phosphate (S1P). S1P is a bioactive lysophospholipid that elicits diverse physiological effect on most types of cells and tissues. May be involved in cell migration processes that are specific for lymphocytes.
 //Subcellular location: Cell membrane; Multi-pass membrane protein.
 //Tissue specificity: Specifically expressed in fetal and adult lymphoid and hematopoietic tissue as well as in lung. Considerable level of expression in adult and fetal spleen as well as adult peripheral leukocytes and lung. Lower expression in adult thymus, lymph node, bone marrow, and appendix as well as in fetal liver, thymus, and lung.
 //Sequence similarities: Belongs to the G-protein coupled receptor 1 family.

Manufactured by TransGenic Inc.



COSMO BIO CO., LTD.
Inspiration for Life Science

TOYO 2CHOME, KOTO-KU, TOKYO, 135-0016, JAPAN

http://www.cosmobio.co.jp e-mail : export@cosmobio.co.jp

Phone : +81-3-5632-9617 FAX : +81-3-5632-9618