

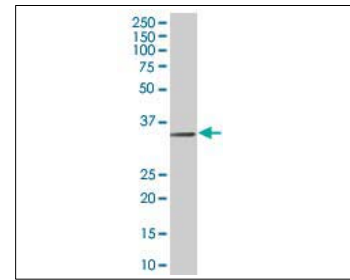


KAL-KB496

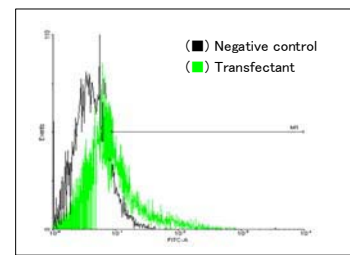
For research use only

Anti Human PTGER3 Polyclonal Antibody

Code No.	KB496
Target	PTGER3
Category	GPCR
Gene ID	5733
Primary Source	HGNC:9595
Synonyms	EP3; EP3e; EP3-I; EP3-II; EP3-IV; EP3-III; MGC27302; MGC141828; MGC141829; PTGER3
Type	Polyclonal Antibody
Immunogen	Recombinant protein of full length Human PTGER3
Raised in	Mouse
Myeloma	-
Clone number	-
Purification	Protein A purified
Source	Mouse Serum
Isotype	-
Cross Reactivity	-
Label	Unlabeled
Concentration	0.5 mg/mL
Contents (Volume)	50 µg
Buffer	PBS, pH 7.2



[WB] PTGER3 transfected 293T cell lysate



[FCM] PTGER3 expressing 293 cells

Storage Store at - 20 °C long term, store at 4 °C short term. Avoid repeated freeze-thaw cycles.

Application WB,FCM

	ELISA	WB	IHC	ICC
	-	1.0	-	-
	IP	FCM	IF	Neutralization
	-	1.0	-	-

(µg/mL)

Reference

1. Adam M., et al. "Cloning and expression of three isoforms of the human EP3 prostanoid receptor." FEBS Lett. 338:170-174(1994)
2. Schmid A., et al. "Splice variants of the human EP3 receptor for prostaglandin E2." Eur. J. Biochem. 228:23-30(1995)
3. Yang J., et al. "Cloning and expression of the EP3-subtype of human receptors for prostaglandin E2." Biochem. Biophys. Res. Commun. 198:999-1006(1994)

UniPlot Summary

//Function: Receptor for prostaglandin E2 (PGE2); the EP3 receptor may be involved in inhibition of gastric acid secretion, modulation of neurotransmitter release in central and peripheral neurons, inhibition of sodium and water reabsorption in kidney tubulus and contraction in uterine smooth muscle. The activity of this receptor can couple to both the inhibition of adenylate cyclase mediated by G-I proteins, and to an elevation of intracellular calcium. The various isoforms have identical ligand binding properties but can interact with different second messenger systems.

//Subcellular location: Cell membrane; Multi-pass membrane protein.

//Tissue specificity: Expressed in small intestine, heart, pancreas, gastric fundic mucosa, mammary artery and pulmonary vessels.

//Sequence similarities: Belongs to the G-protein coupled receptor 1 family.

Manufactured by TransGenic Inc.



COSMO BIO CO., LTD.
Inspiration for Life Science

TOYO 2CHOME, KOTO-KU, TOKYO, 135-0016, JAPAN

http://www.cosmobio.co.jp e-mail : export@cosmobio.co.jp

Phone : +81-3-5632-9617 FAX : +81-3-5632-9618