



KAL-KB495

For research use only

Anti Human GPR143 Polyclonal Antibody

Code No. KB495
Target GPR143
Category GPCR
Gene ID 4935
Primary Source HGNC:20145
Synonyms OA1; GPR143

Type Polyclonal Antibody
Immunogen Recombinant protein of full length Human GPR143

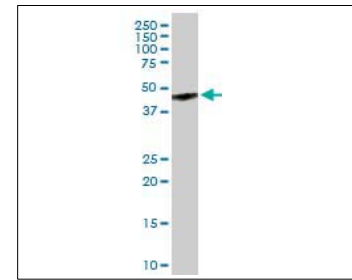
Raised in Mouse
Myeloma -
Clone number -
Purification Protein A purified
Source Mouse Serum
Isotype -
Cross Reactivity -
Label Unlabeled
Concentration 1 mg/mL
Contents (Volume) 50 µg
Buffer PBS, pH 7.2

Storage Store at - 20 °C long term, store at 4 °C short term. Avoid repeated freeze-thaw cycles.

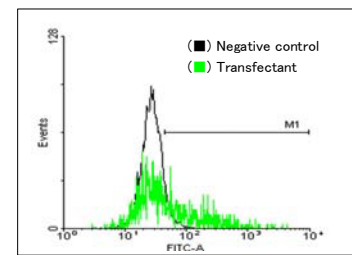
Application WB,FCM

	ELISA	WB	IHC	ICC
	-	1.0	-	-
	IP	FCM	IF	Neutralization
	-	1.0	-	-

(µg/mL)



[WB] GPR143 transfected 293T cell lysate



[FCM] GPR143 expressing 293 cells

Reference

1. Bassi M.T., et al. "Cloning of the gene for ocular albinism type 1 from the distal short arm of the X chromosome." Nat. Genet. 10:13-19(1995)
2. Ross M.T., et al. "The DNA sequence of the human X chromosome." Nature 434:325-337(2005)
3. The MGC Project Team. "The status, quality, and expansion of the NIH full-length cDNA project: the Mammalian Gene Collection (MGC)." Genome Res. 14:2121-2127(2004)

UniPlot Summary

//Function: Not known; binds heterotrimeric G proteins.

//Subcellular location: Melanosome membrane; Multi-pass membrane protein. Note: Targeted to intracellular organelles, namely the melanosomes in pigment cells.

//Tissue specificity: Exclusively expressed in pigment cells.

//Sequence similarities: Belongs to the G-protein coupled receptor OA family.

Manufactured by TransGenic Inc.



COSMO BIO CO., LTD.
Inspiration for Life Science

TOYO 2CHOME, KOTO-KU, TOKYO, 135-0016, JAPAN

http://www.cosmobio.co.jp e-mail : export@cosmobio.co.jp

Phone : +81-3-5632-9617 FAX : +81-3-5632-9618