



KAL-KB493 For research use only

Anti Human DARC Polyclonal Antibody

Code No. KB493
Target DARC
Category GPCR
Gene ID 2532
Primary Source HGNC:4035
Synonyms FY; Dfy; GPD; GpFy; CCBP1; CD234; WBCQ1; DARC

Type Polyclonal Antibody
Immunogen Recombinant protein of full length Human DARC

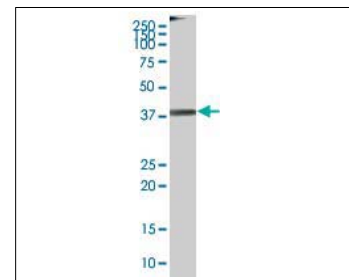
Raised in Mouse
Myeloma -
Clone number -
Purification Protein A purified
Source Mouse Serum
Isotype -
Cross Reactivity -
Label Unlabeled
Concentration 0.5 mg/mL
Contents (Volume) 50 µg
Buffer PBS, pH 7.2

Storage Store at - 20 °C long term, store at 4 °C short term. Avoid repeated freeze-thaw cycles.

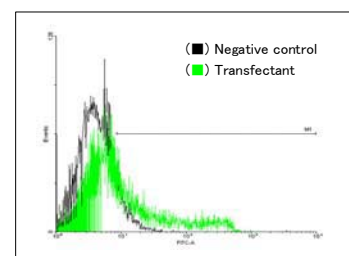
Application WB,FCM

	ELISA	WB	IHC	ICC
	-	1.0	-	-
	IP	FCM	IF	Neutralization
	-	1.0	-	-

(µg/mL)



[WB] DARC transfected 293T cell lysate



[FCM] DARC expressing 293 cells

Reference

1. Chaudhuri A., et al. "Cloning of glycoprotein D cDNA, which encodes the major subunit of the Duffy blood group system and the receptor for the Plasmodium vivax malaria parasite." Proc. Natl. Acad. Sci. U.S.A. 90:10793-10797(1993)
2. Tournamille C., et al. "Disruption of a GATA motif in the Duffy gene promoter abolishes erythroid gene expression in Duffy-negative individuals." Nat. Genet. 10:224-228(1995)
3. Iwamoto S., et al. "Genomic organization of the glycoprotein D gene: Duffy blood group Fya/Fyb alloantigen system is associated with a polymorphism at the 44-amino acid residue." Blood 85:622-626(1995)

UniPlot Summary

//Function: Non-specific receptor for many chemokines such as IL-8, GRO, RANTES, MCP-1 and TARC. It is also the receptor for the human malaria parasites Plasmodium vivax and Plasmodium knowlesi.
 //Subcellular location: Membrane; Multi-pass membrane protein.
 //Tissue specificity: Found in adult kidney, adult spleen, bone marrow and fetal liver. In particular, it is expressed along postcapillary venules throughout the body, except in the adult liver. Erythroid cells and postcapillary venule endothelium are the principle tissues expressing duffy. Fy(-A-B) individuals do not express duffy in the bone marrow, however they do, in postcapillary venule endothelium.
 //Sequence similarities: Belongs to the G-protein coupled receptor Duffy family.

Manufactured by TransGenic Inc.

COSMO BIO CO., LTD.
Inspiration for Life Science

TOYO 2CHOME, KOTO-KU, TOKYO, 135-0016, JAPAN

http://www.cosmobio.co.jp e-mail : export@cosmobio.co.jp

Phone : +81-3-5632-9617 FAX : +81-3-5632-9618