

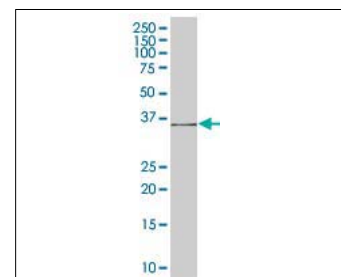


KAL-KB489

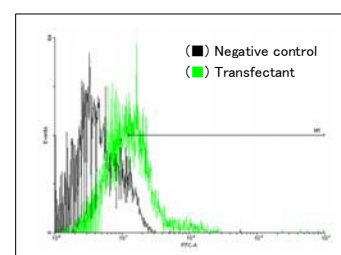
For research use only

Anti Human CCBP2 Polyclonal Antibody

Code No.	KB489
Target	CCBP2
Category	GPCR
Gene ID	1238
Primary Source	HGNC:1565
Synonyms	D6; hD6; CCR9; CCR10; CMKBR9; MGC126678; MGC138250; CCBP2
Type	Polyclonal Antibody
Immunogen	Recombinant protein of full length Human CCBP2
Raised in	Mouse
Myeloma	-
Clone number	-
Purification	Protein A purified
Source	Mouse Serum
Isotype	-
Cross Reactivity	-
Label	Unlabeled
Concentration	1 mg/mL
Contents (Volume)	50 µg
Buffer	PBS, pH 7.2



[WB] CCBP2 transfected 293T cell lysate



[FCM] CCBP2 expressing 293 cells

Storage Store at - 20 °C long term, store at 4 °C short term. Avoid repeated freeze-thaw cycles.

Application WB,FCM

ELISA	WB	IHC	ICC
-	1.0	-	-
IP	FCM	IF	Neutralization
-	1.0	-	-

(µg/mL)

Reference

1. Bonini J.A., et al. "Cloning, expression, and chromosomal mapping of a novel human CC-chemokine receptor (CCR10) that displays high-affinity binding for MCP-1 and MCP-3." DNA Cell Biol. 16:1249-1256(1997)
2. Nibbs R.J.B., et al. "Cloning and characterization of a novel promiscuous human beta-chemokine receptor D6." J. Biol. Chem. 272:32078-32083(1997)
3. Ota T., et al. "Complete sequencing and characterization of 21,243 full-length human cDNAs." Nat. Genet. 36:40-45(2004)

UniPlot Summary

//Function: Receptor for C-C type chemokines including SCYA2/MCP-1, SCY3/MIP-1-alpha, SCYA5/RANTES and SCYA7/MCP-3.

//Subcellular location: Cell membrane; Multi-pass membrane protein.

//Tissue specificity: Expressed primarily in placenta and fetal liver, and found at very low levels in the lung and lymph node. Found in endothelial cells lining afferent lymphatics in dermis and lymph nodes. Also found in lymph nodes subcapsular and medullary sinuses, tonsillar lymphatic sinuses and lymphatics in mucosa and submucosa of small and large intestine and appendix. Also found in some malignant vascular tumors.

//Sequence similarities: Belongs to the G-protein coupled receptor 1 family.

Manufactured by TransGenic Inc.



COSMO BIO CO., LTD.
Inspiration for Life Science

TOYO 2CHOME, KOTO-KU, TOKYO, 135-0016, JAPAN

http://www.cosmobio.co.jp e-mail : export@cosmobio.co.jp

Phone : +81-3-5632-9617 FAX : +81-3-5632-9618