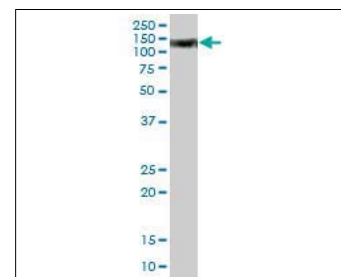


KAL-KB477

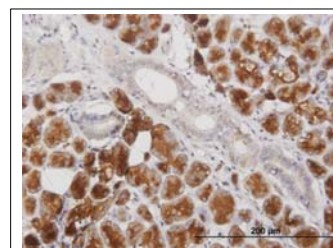
For research use only

Anti Human LAMP2 Polyclonal Antibody

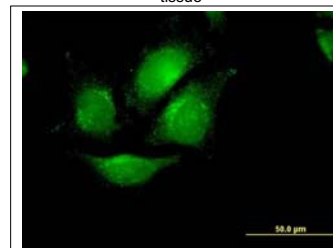
Code No.	KB477
Target	LAMP2
Category	Others
Gene ID	3920
Primary Source	HGNC:6501
Synonyms	LAMPB; CD107b; LGP110; LAMP2
Type	Polyclonal Antibody
Immunogen	Recombinant protein of full length Human LAMP2
Raised in	Mouse
Myeloma	-
Clone number	-
Purification	Protein A purified
Source	Mouse Serum
Isotype	-
Cross Reactivity	-
Label	Unlabeled
Concentration	0.49 mg/mL
Contents (Volume)	50 µg
Buffer	PBS, pH 7.2



[WB] human liver tissue lysate



[IHC] Paraffin embedded human salivary gland tissue



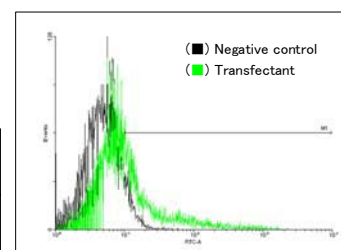
[IF] HeLa cell

Storage Store at - 20 °C long term, store at 4 °C short term. Avoid repeated freeze-thaw cycles.

Application WB,IHC,IF,FCM

ELISA	WB	IHC	ICC
-	1.0	3.0	-
IP	FCM	IF	Neutralization
-	1.0	10	-

(µg/mL)



[FCM] LAMP2 expressing 293 cells

Reference

1. Fukuda M., et al. "Cloning of cDNAs encoding human lysosomal membrane glycoproteins, h-lamp-1 and h-lamp-2. Comparison of their deduced amino acid sequences." J. Biol. Chem. 263:18920-18928(1988)
2. Konecki D.S., et al. "Complete cDNA sequence of human lysosome-associated membrane protein-2." Biochem. Biophys. Res. Commun. 205:1-5(1994)
3. Konecki D.S., et al. "An alternatively spliced form of the human lysosome-associated membrane protein-2 gene is expressed in a tissue-specific manner." Biochem. Biophys. Res. Commun. 215:757-767(1995)

UniPlot Summary

//Function: Implicated in tumor cell metastasis. May function in protection of the lysosomal membrane from autodigestion, maintenance of the acidic environment of the lysosome, adhesion when expressed on the cell surface (plasma membrane), and inter- and intracellular signal transduction.

//Subcellular location: Cell membrane, Endosome membrane, Lysosome membrane; Single-pass type I membrane protein.

//Tissue specificity: Isoform LAMP-2A is highly expressed in placenta, lung and liver, less in kidney and pancreas, low in brain and skeletal muscle. Isoform LAMP-2B is highly expressed in skeletal muscle, less in brain, placenta, lung, kidney and pancreas, very low in liver.

//Sequence similarities: Belongs to the LAMP family.

Manufactured by  TransGenic Inc.



COSMO BIO CO., LTD.
Inspiration for Life Science

TOYO 2CHOME, KOTO-KU, TOKYO, 135-0016, JAPAN

<http://www.cosmobio.co.jp> e-mail : export@cosmobio.co.jp

Phone : +81-3-5632-9617 FAX : +81-3-5632-9618