



**KAL-KB465**

For research use only

# Anti Human ATP1B3 Polyclonal Antibody

**Code No.** KB465  
**Target** ATP1B3  
**Category** Enzyme  
**Gene ID** 483  
**Primary Source** HGNC:806  
**Synonyms** CD298; ATPB-3; FLJ29027; ATP1B3

**Type** Polyclonal Antibody  
**Immunogen** Recombinant protein of full length Human ATP1B3

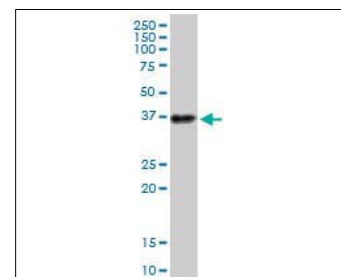
**Raised in** Mouse  
**Myeloma** -  
**Clone number** -  
**Purification** Protein A purified  
**Source** Mouse Serum  
**Isotype** -  
**Cross Reactivity** -  
**Label** Unlabeled  
**Concentration** 0.5 mg/mL  
**Contents (Volume)** 50 µg  
**Buffer** PBS, pH 7.2

**Storage** Store at - 20 °C long term, store at 4 °C short term. Avoid repeated freeze-thaw cycles.

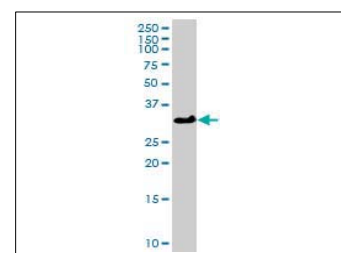
**Application** WB

ELISA	WB	IHC	ICC
-	1.0	-	-
IP	FCM	IF	Neutralization
-	-	-	-

(µg/mL)



[WB] A-431 cell lysate



[WB] ATP1B3 transfected 293T cell lysate

## Reference

1. Malik N., et al. "Identification of the mammalian Na,K-ATPase 3 subunit." J. Biol. Chem. 271:22754-22758(1996)
2. Malik N., et al. "Structural organization and chromosomal localization of the human Na,K-ATPase beta 3 subunit gene and pseudogene." Mamm. Genome 9:136-143(1998)
3. The MGC Project Team. "The status, quality, and expansion of the NIH full-length cDNA project: the Mammalian Gene Collection (MGC)." Genome Res. 14:2121-2127(2004)

## UniPlot Summary

//Function: This is the non-catalytic component of the active enzyme, which catalyzes the hydrolysis of ATP coupled with the exchange of Na<sup>+</sup> and K<sup>+</sup> ions across the plasma membrane. The exact function of the beta-3 subunit is not known.  
//Subcellular location: Membrane; Single-pass type II membrane protein. Melanosome.  
//Sequence similarities: Belongs to the X(+)/potassium ATPases subunit beta family.

Manufactured by TransGenic Inc.



COSMO BIO CO., LTD.  
Inspiration for Life Science

TOYO 2CHOME, KOTO-KU, TOKYO, 135-0016, JAPAN

http://www.cosmobio.co.jp e-mail : export@cosmobio.co.jp

Phone : +81-3-5632-9617 FAX : +81-3-5632-9618