



**COSMO BIO CO., LTD.**  
Inspiration for Life Science

## Cosmo Bio Co., Ltd

TOYO EKIMAE BLDG, 2-20, TOYO 2CHOME,  
KOTO-KU, TOKYO 135-0016, JAPAN  
TEL : +81-3-5632-9617  
FAX : +81-3-5632-9618  
URL : <http://www.cosmobio.co.jp/>  
e-mail : [export@cosmobio.co.jp](mailto:export@cosmobio.co.jp)

### 国内連絡先

TEL : 03-5632-9610  
FAX : 03-5632-9619

## Catalog No. **CBX00614**

**Mouse monoclonal antibody**

**Anti-Human FTSJ2**

### ■ Formulation

Mouse monoclonal anti-human **FTSJ2** antibody  
in PBS (3.0 mM KCl, 1.5 mM  $\text{KH}_2\text{PO}_4$ ,  
140 mM NaCl, 8.0 mM  $\text{Na}_2\text{HPO}_4$  (pH 7.4))  
containing 1% bovine serum albumin (BSA)  
and 0.05% sodium azide ( $\text{NaN}_3$ ).

### ■ Antibody concentration

100  $\mu\text{g}/\text{ml}$  (1.0 ml)

### ■ Storage

Store at 2-8°C for up to one year.  
We recommend storing at -20°C for long-term storage.  
Avoid repeat freezing and thawing cycles.

### ■ Preparation

This antibody was purified using protein G column  
chromatography from culture supernatant of hybridoma  
cultured in a medium containing bovine IgG-depleted  
(approximately 95%) fetal bovine serum.

### ■ Sterility

Filtered through a 0.22  $\mu\text{m}$  membrane.

### ■ Applications

WB, Dot Blot

### ■ Disposal

This antibody solution contains sodium azide ( $\text{NaN}_3$ )  
as a preservative. There is a potential hazard that  
 $\text{NaN}_3$  reacts with copper or lead to produce an expl-  
osive compound. For safe disposal, the vial has to  
be washed thoroughly with water.

### ■ Safety warnings and precautions

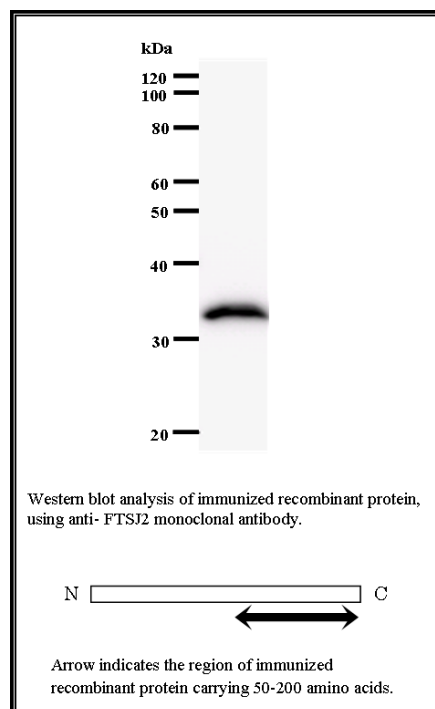
Caution must be taken to avoid contact with skin or eyes. In such a case, rinse thoroughly at once with water.  
Do not ingest, inhale, or swallow. Seek medical attention immediately.  
Wear appropriate protective clothing such as laboratory overalls, safety glasses and gloves.  
It is strongly advised that this product should be handled by people who have been well trained in  
laboratory techniques and that it is handled with care pursuant to the principles of good laboratory practice.  
All chemicals are deemed potentially harmful.  
The vial is prone to fall over. Use caution, especially when the lid is off.

**Lot No. 2372C6a-1**

**Clone No. 2372C6a**

**Antibody class : IgG1**

**Immunogen : Recombinant**



FOR RESEARCH USE ONLY, NOT FOR USE IN DIAGNOSTIC PROCEDURES.

manufactured by BMR



Catalog No. **CBX00614**

**Mouse monoclonal antibody**

**Anti-Human FTSJ2**

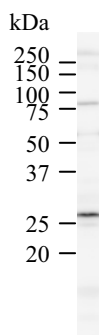
### ■ Background

The protein encoded by this gene is a member of the S-adenosylmethionine-binding protein family. It is a nucleolar protein and it may be involved in the processing and modification of rRNA. This gene has been suggested to be involved in cell cycle control and DNA repair. [NCBI Entrez Gene Summary]

### ■ Recommended condition

WB: 0.2-2  $\mu$ g/ml

### ■ Application



Detection of human FTSJ2 by Western blot.  
Samples: Whole cell lysate (25  $\mu$ g) from HEK293 cells.  
[Lot No. 2372C6a-1]

Predicted molecular weight: 27 kDa