



POLYCLONAL ANTIBODY

For research use only. Not for clinical diagnosis.

Catalog No. TSS-P01

Anti uroplakin I a

BACKGROUND

Uroplakin is a protein that is specific for the urothelium and it is composed of subtypes Ia, Ib, II, and III. The protein exists on cell surfaces. While the protein has been studied in the field of basic research on the urothelium, it has been suggested that the protein is useful as a tumor marker in clinical medicine.

Product type	Polyclonal antibodies
Host	Rabbit
Source	Antiserum
Form	Liquid
Volume	100ul
Concentration	
Specificity	human uroplakin I a
Antigen	amino acid residues 141-152 (DQGQELTRLWDR)
Isotype	

Application notes WB, IHC

Recommended use

Recommended dilutions

Western blotting, 1/10,000
Immunohistochemistry, 1/200

Optimal dilutions/concentrations should be determined by the end user.

Cross reactivity React with human. Not test for other species.

Storage Store at 4°C for a short time (below -70°C for prolonged storage)
Aliquot to avoid cycles of freeze/thaw

References

- 1) Wu XR, et al: Uroplakins in urothelial biology, function, and disease. *Kidney Int* 75:1153-65, 2009
- 2) T Yuasa, et al : Expression of transitional cell-specific genes, uroplakina I a and II , in bladder cancer : Detection of circulating cancer cells in the peripheral blood of metastatic patients. *Int J Urol* 6 :286-292, 1999.

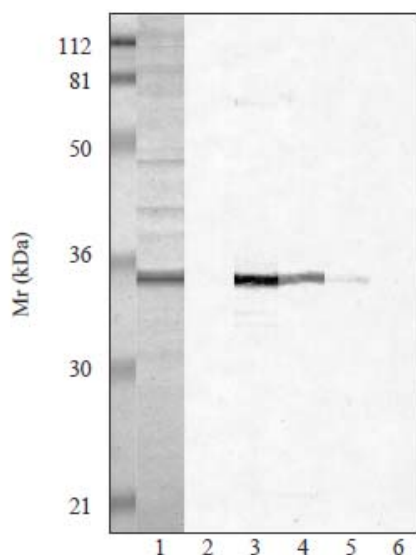


Fig1. Western blot analysis

Recombinant human UP Ia protein combined with thioredoxin
(Mr 35kDa)

Lane1:SDS-PAGE, lane2:negative control, lane3:anti-human
UP1a antibody, lane4: anti-human UP1a antibody absorbed
by recombinant human UP1aprotein 0.1 μ g, lane5:anti-human
UP1a antibody absorbed by recombinant human UP1aprotein
10 μ g, lane6:anti-human UP1a antibody absorbed by synthetic
immunogen polypeptide 10 μ g

For research use only. Not for clinical diagnosis.



COSMO BIO Co., LTD.

Inspiration for Life Science

TOYO 2CHOME, KOTO-KU, TOKYO, 135-0016, JAPAN

URL: <http://www.cosmobio.co.jp>

e-mail: export@cosmobio.co.jp

[Outside Japan] Phone : +81-3-5632-9617

[国内連絡先] Phone : +81-3-5632-9610

FAX : +81-3-5632-9618

FAX : +81-3-5632-9619

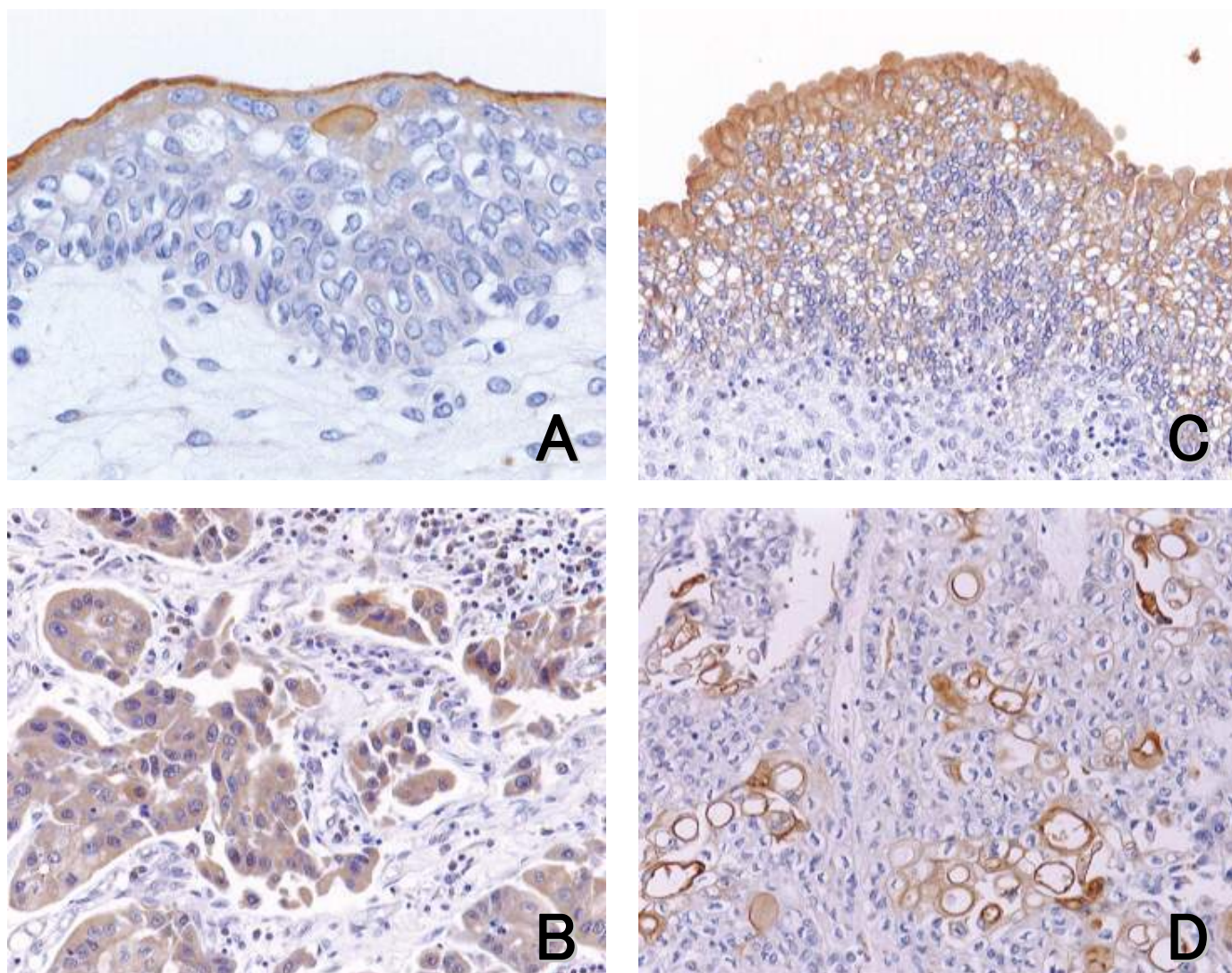


Fig.2

Urothelial cancer A : superficial pattern (x40) , B: cytoplasmic p. (x40) , C: intercellular p. (x20) , D: micro luminal p. (x20)

For research use only. Not for clinical diagnosis.



COSMO BIO Co., LTD.

Inspiration for Life Science

TOYO 2CHOME, KOTO-KU, TOKYO, 135-0016, JAPAN

URL: <http://www.cosmobio.co.jp>

e-mail: export@cosmobio.co.jp

[Outside Japan] Phone : +81-3-5632-9617

[国内連絡先] Phone : +81-3-5632-9610

FAX : +81-3-5632-9618

FAX : +81-3-5632-9619