



MONOCLONAL ANTIBODY

*For research use only, Not for diagnostic use.*

**Catalog No. SHI-EXO-M01**

## Anti CD9 [ Clone : 12A12]

### BACKGROUND

CD9 is a cell surface glycoprotein which belongs to the tetraspanin superfamily. CD9 is known to complex with integrins and other transmembrane 4 superfamily proteins. It is found on the surface of exosomes. It can modulate cell adhesion and migration and also trigger platelet activation and aggregation.

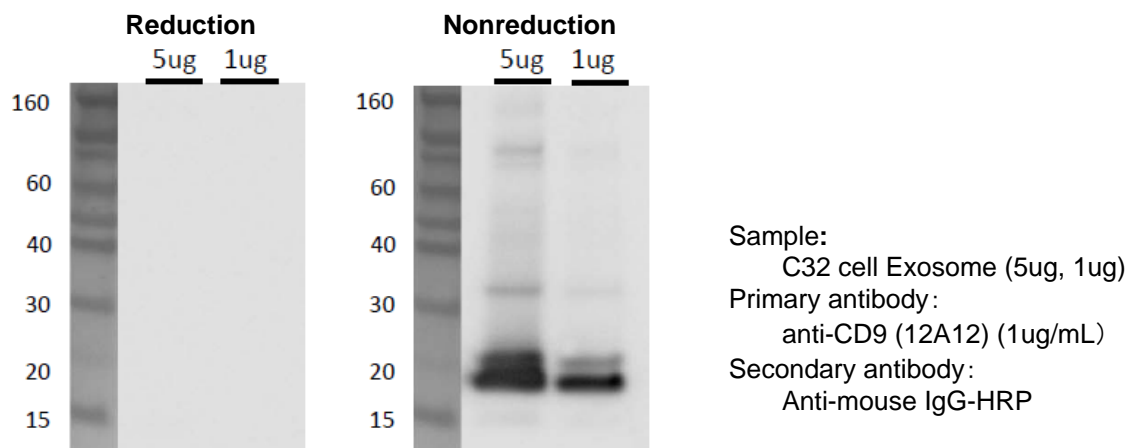
|                         |  |
|-------------------------|--|
| <b>Product type</b>     | Primary antibody   |
| <b>Immunogen</b>        | Human CD9 (a.a. 113-195)   |
| <b>Raised in</b>        | Mouse  |
| <b>Myeloma</b>          | -  |
| <b>Clone number</b>     | 12A12  |
| <b>Isotype</b>          | IgG2b  |
| <b>Source</b>           | Culture supernatant  |
| <b>Purification</b>     | Affinity purified by Protein G   |
| <b>Buffer</b>           | Phosphate buffered saline containing 0.1% NaN <sub>3</sub> as a preservative |
| <b>Concentration</b>    | 1 mg / mL  |
| <b>Volume</b>           | 50 ul  |
| <b>Label</b>            | Unlabeled  |
| <b>Specificity</b>      | Human CD9  |
| <b>Cross reactivity</b> | Human. Other species is not tested.  |
| <b>Storage</b>          | Store below - 40°C<br>Aliquot to avoid cycles of freeze/thaw.                |

|                              |   |
|------------------------------|---|
| <b>Application notes</b>     | • <b>Western blotting:</b> 1/500 - 1/2,000 (0.5 - 2ug/mL, non-reductive condition)                |
| <b>Recommended dilutions</b> | • <b>Immunoprecipitation:</b> 1/200 – 1/1,000 (1- 5ug/mL)<br>* Experiment example : Serum Exosome |
|                              | • <b>ELISA:</b> 1/10,000 – 1/200,000 (5 ng/mL - 0.1ug/mL)   |

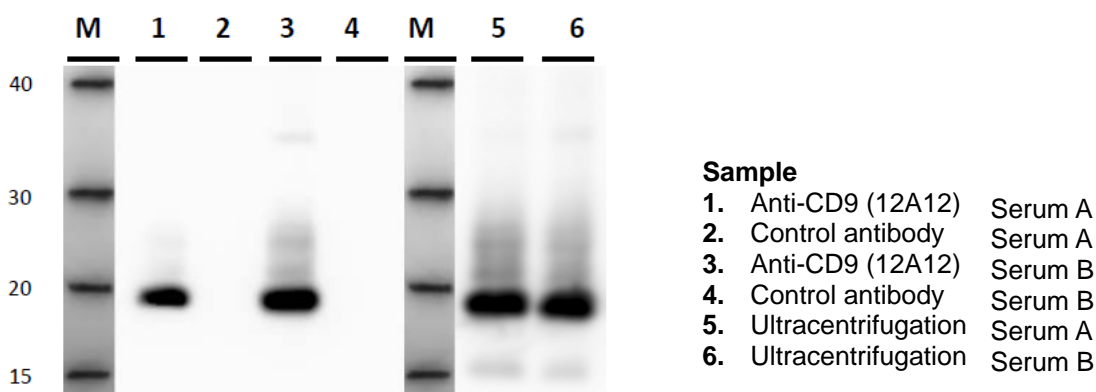
Other applications have not been tested.  
Optimal dilutions/concentrations should be determined by the end user.

|                   |   |
|-------------------|---|
| <b>References</b> | - |
|-------------------|---|

## ANTIBODY CHARACTERIZATION



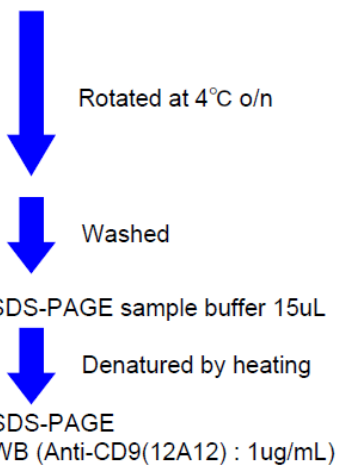
**Fig.1 Western blot** analysis of CD9 in C32 cell Exosome with anti-CD9 (12A12) antibody



**Fig.2 Immunoprecipitation** in Human serum exosome

### Protocol

|                 |                                 |
|-----------------|---------------------------------|
| Sample          |                                 |
| Serum           | 150uL                           |
| +               |                                 |
| Anti-CD9(12A12) | 1ug (Solid phase Magnetic bead) |
| PBS             | 150uL                           |



ANTIBODY CHARACTERIZATION

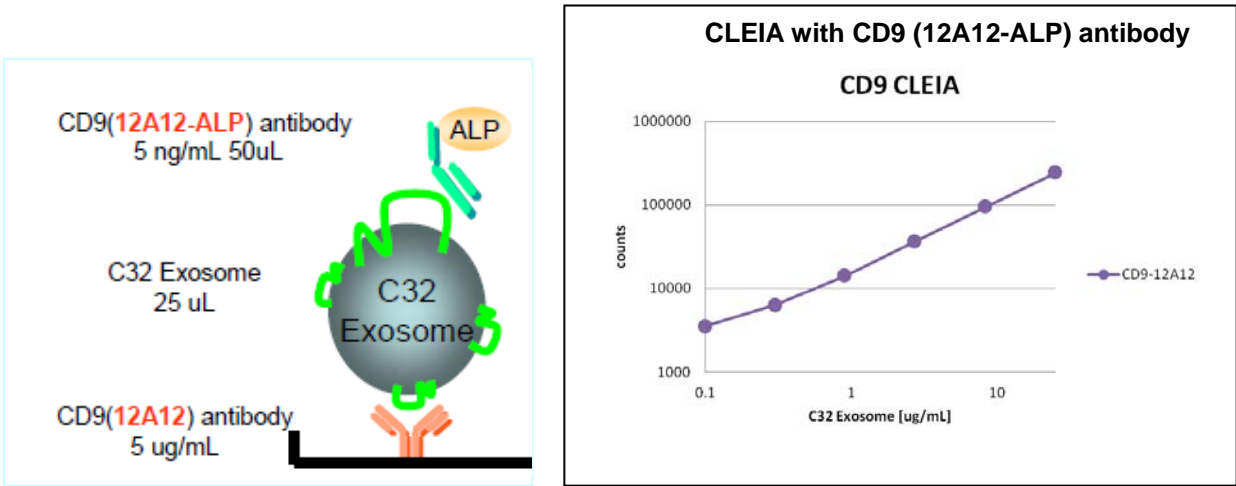


Fig.3 ELISA data of C32 cell exosome with anti-CD9 (12A12-ALP) antibody (5 ng/mL)

RELATED PRODUCT:

| Product Name                         | Application     | Quantity | Maker | Cat#        |
|--------------------------------------|-----------------|----------|-------|-------------|
| Anti CD9 (12A12) Monoclonal Antibody | WB / IP / ELISA | 100 ug   | CAC   | SHI-EXO-M01 |
| Anti CD63 (8A12) Monoclonal Antibody | WB / IP         | 100 ug   | CAC   | SHI-EXO-M02 |
| Anti CD81 (12C4) Monoclonal Antibody | WB / IP         | 100 ug   | CAC   | SHI-EXO-M03 |

For research use only, Not for diagnostic use.



**COSMO BIO Co., LTD.**  
Inspiration for Life Science  
TOYO 2CHOME, KOTO-KU, TOKYO, 135-0016, JAPAN  
URL: <http://www.cosmobio.co.jp> e-mail: [export@cosmobio.co.jp](mailto:export@cosmobio.co.jp)  
[Outside Japan] Phone : +81-3-5632-9617 [国内連絡先] Phone : +81-3-5632-9610  
FAX : +81-3-5632-9618 FAX : +81-3-5632-9619