

MONOCLONAL ANTIBODY

For research use only, Not for diagnostic use.

Catalog No. CAC-SHI-EXO-M01-EX

Anti CD9 [Clone : 12A12]

BACKGROUND

CD9 is a cell surface glycoprotein which belongs to the tetraspanin superfamily. CD9 is known to complex with integrins and other transmembrane 4 superfamily proteins. It is found on the surface of exosomes. It can modulate cell adhesion and migration and also trigger platelet activation and aggregation.

| | |
|-------------------------|--|
| Product type | Primary antibody |
| Immunogen | Human CD9(a.a 113-195) |
| Raised in | Mouse |
| Myeloma | - |
| Clone number | 12A12 |
| Isotype | IgG2b |
| Source | Culture supernatant |
| Purification | Affinity purified by Protein A |
| Buffer | Phosphate buffered saline containing 0.1% NaN ₃ as a preservative |
| Concentration | 1 mg / mL |
| Volume | 100 ul |
| Label | Unlabeled |
| Specificity | Human CD9 |
| Cross reactivity | Human. Other species is not tested. |
| Storage | Store below - 40°C Aliquot to avoid cycles of freeze/thaw.. |

| | |
|------------------------------|--|
| Application notes | <ul style="list-style-type: none"> • Western blotting: 1/500 - 1/2,000 (0.5 - 2ug/mL, non-reductive condition) |
| Recommended dilutions | <ul style="list-style-type: none"> • Immunoprecipitation: 1/200 – 1/1,000 (1- 5ug/mL) • * Experiment example : Serum Exosome • ELISA: 1/10,000 – 1/200,000 (5 ng/mL - 0.1ug/mL) |

Other applications have not been tested.
Optimal dilutions/concentrations should be determined by the end user.

| | |
|-------------------|---|
| References | - |
|-------------------|---|

ANTIBODY CHARACTERIZATION

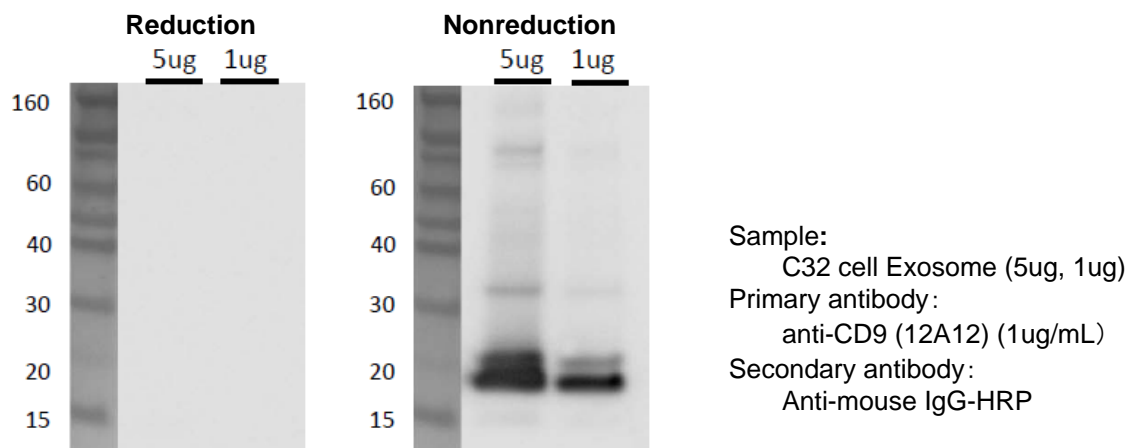


Fig.1 Western blot analysis of CD9 in C32 cell Exosome with anti-CD9 (12A12) antibody

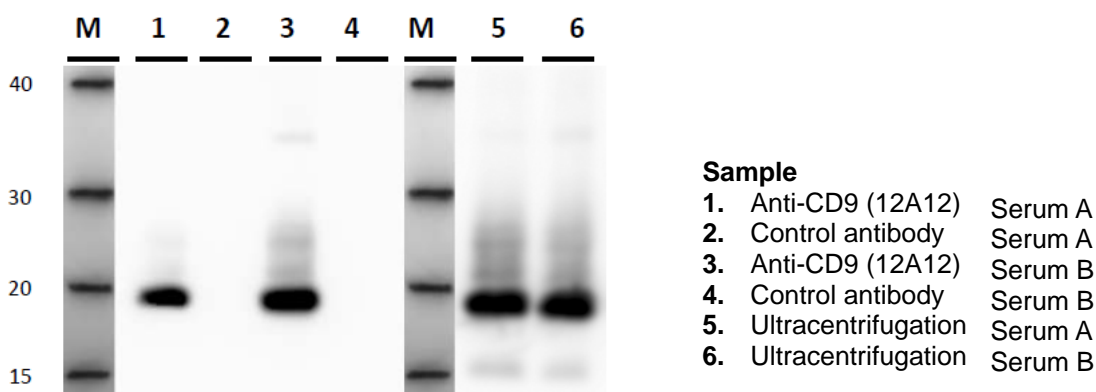
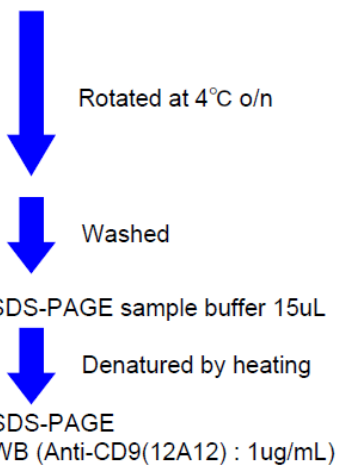


Fig.2 Immunoprecipitation in Human serum exosome

Protocol

| | |
|-----------------|---------------------------------|
| Sample | |
| Serum | 150uL |
| + | |
| Anti-CD9(12A12) | 1ug (Solid phase Magnetic bead) |
| PBS | 150uL |



ANTIBODY CHARACTERIZATION

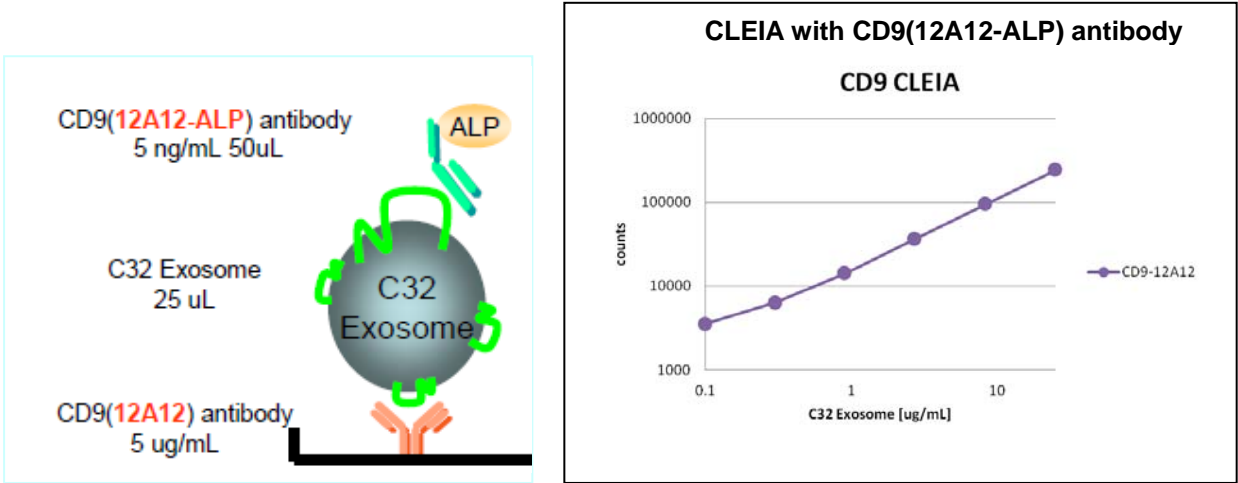


Fig.3 ELISA data of C32 cell exosome with anti-CD9 (12A12-ALP) antibody (5 ng/mL)

RELATED PRODUCT:

| Product Name | Application | Quantity | Cat# |
|--------------------------------------|-----------------|----------|--------------------|
| Anti CD9 (12A12) Monoclonal Antibody | WB / IP / ELISA | 100 ug | CAC-SHI-EXO-M01-EX |
| Anti CD63 (8A12) Monoclonal Antibody | WB / IP | 100 ug | CAC-SHI-EXO-M02-EX |
| Anti CD81 (12C4) Monoclonal Antibody | WB / IP | 100 ug | CAC-SHI-EXO-M03-EX |

For research use only, Not for diagnostic use.

Manufactured by  SHIONOGI & CO., LTD.



COSMO BIO Co., LTD.

Inspiration for Life Science

TOYO 2CHOME, KOTO-KU, TOKYO, 135-0016, JAPAN

URL: <http://www.cosmobio.co.jp> e-mail: export@cosmobio.co.jp

[Outside Japan] Phone : +81-3-5632-9617 [国内連絡先] Phone : +81-3-5632-9610

FAX : +81-3-5632-9618 FAX : +81-3-5632-9619