



## Anti Collagen 7

<b>Product type</b>	Primary antibodies
<b>Host</b>	Mouse
<b>Source</b>	Tissue culture supernatant
<b>Form</b>	Hybridoma supernatant with 0.02% NaN <sub>3</sub> as a preservative.
<b>Volume</b>	500µl
<b>Concentration</b>	
<b>Specificity</b>	Collagen 7 No reactivity against other type collagens
<b>Antigen</b>	Native type-VII collagen from bovine cornea
<b>Clone</b>	BML39
<b>Isotype</b>	IgG1k

**Application notes** WB, IF, IP Not tested yet in other applications.

### Recommended use

### Recommended dilutions

Western Blot: Use at an assay dependant dilution.

Recognizes a band at approximately 300 kDa and degraded fragments around 170 kDa.

Immunofluorescence: 1/100 for staining of acetone-fixed cryostat tissue sections.

Immunoprecipitation: Use at an assay dependant dilution.

Optimal dilutions/concentrations should be determined by the end user.

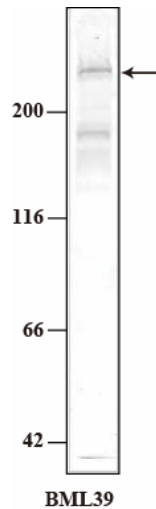
### Staining Pattern

**Cross reactivity** Human, Rabbit, Bovine, Porcine (No cross-react: mouse, rat)

**Storage** Store below -20°C (below -70°C for prolonged storage). Aliquot to avoid cycles of freeze/thaw.

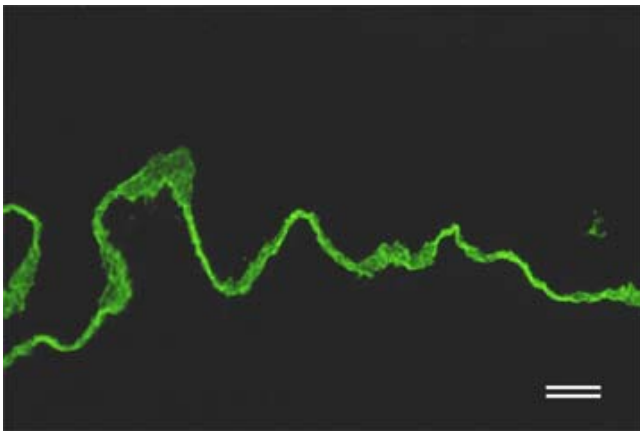
### References

- 1) Hirako Y., Yoshino K., Zillikens D., Owaribe K. Extracellular cleavage of bullous pemphigoid antigen 180/type XVII collagen and its involvement in hemidesmosomal disassembly. J Biochem. 133: 197-206 (2003)
- 2) Uematsu J., Nishizawa Y., Hirako Y., Kitamura K., Usukura J., Miyata T., Owaribe K. Both type-I hemidesmosomes and adherens-type junctions contribute to the cell-substratum adhesion system in myoepithelial cells. Eur J Cell Biol. 84: 407-415 (2005)
- 3) Owaribe K, Nishizawa Y, Franke WW. Isolation and characterization of hemidesmosomes from bovine corneal epithelial cells. Exp Cell Res. 192:622-630. (1991)



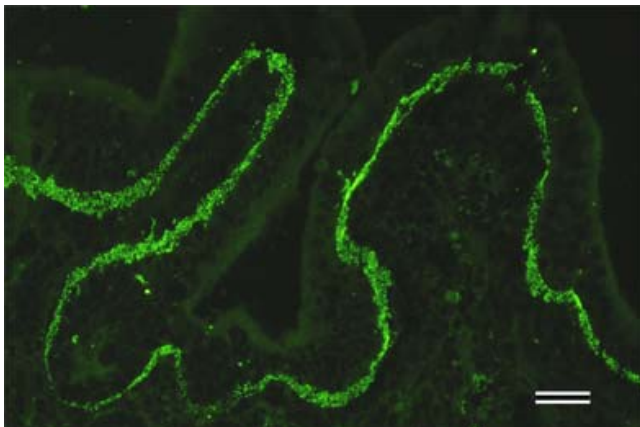
#### Western Blot analysis

Sample: conditioned medium from BMGE+H cell  
BML39 recognizes type-7 collagen as a band at approximately 300 kDa and degraded fragments around 170 kDa.



#### Immunofluorescence (×20)

Human skin was analyzed by immunofluorescence with BML39 (1:200).  
Epidermal basal layer containing type-7 collagen is stained green. (Scale bar, 40 m)



#### Immunofluorescence (×20)

Human skin was analyzed by immunofluorescence with BM515 (1:200). Epidermal basal layer containing laminin 3 chain is stained green. (Scale bar, 40 m)

*For research use only. Not for clinical diagnosis.*



COSMO BIO Co., LTD.

Inspiration for Life Science

TOYO 2CHOME, KOTO-KU, TOKYO, 135-0016, JAPAN

URL: <http://www.cosmobio.co.jp>

e-mail: [export@cosmobio.co.jp](mailto:export@cosmobio.co.jp)

[Outside Japan] Phone : +81-3-5632-9617

[国内連絡先] Phone : +81-3-5632-9610

FAX : +81-3-5632-9618

FAX : +81-3-5632-9619