



Anti BPAG1

Product type	Primary antibodies
Host	Mouse
Source	Tissue culture supernatant
Form	Hybridoma supernatant with 0.02% NaN ₃ as a preservative.
Volume	500µl
Concentration	
Specificity	BPAG1
Antigen	Native BP230 from bovine cornea
Clone	279
Isotype	IgG1k

Application notes WB, IF Not tested yet in other applications.

Recommended use

Recommended dilutions

Western Blot: Use at an assay dependant dilution.

Recognizes a band at approximately 230 kDa

Immunofluorescence: 1/50 for staining of acetone-fixed cryostat tissue sections

Optimal dilutions/concentrations should be determined by the end user.

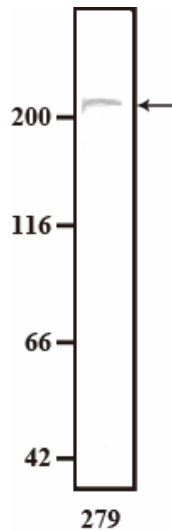
Staining Pattern

Cross reactivity Human, Rat, Rabbit, Bovine, Porcine

Storage Store below -20°C (below -70°C for prolonged storage). Aliquot to avoid cycles of freeze/thaw.

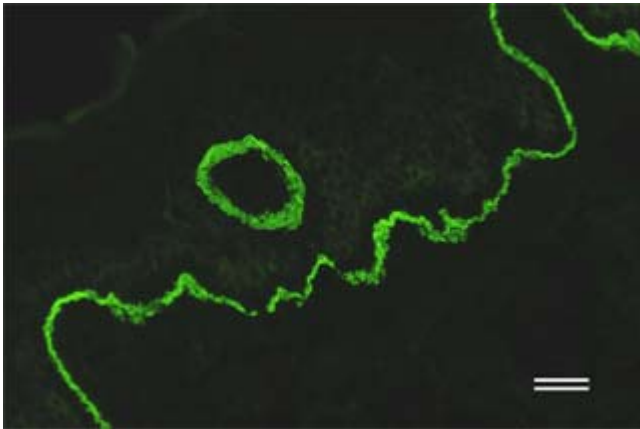
References

- 1) Owaribe K, Nishizawa Y, Franke WW. Isolation and characterization of hemidesmosomes from bovine corneal epithelial cells. *Exp Cell Res.* 192:622-630. (1991)
- 2) Okumura M, Yamakawa H, Ohara O, Owaribe K. Novel alternative splicings of BPAG1 (bullous pemphigoid antigen 1) including the domain structure closely related to MACF (microtubule actin cross-linking factor). *J Biol Chem.* 277:6682-6687. (2002)
- 3) Hirako Y, Usukura J, Uematsu J, Hashimoto T, Kitajima Y, Owaribe K. Cleavage of BP180, a 180-kDa bullous pemphigoid antigen, yields a 120-kDa collagenous extracellular polypeptide. *J Biol Chem.* 273:9711-9717. (1998)



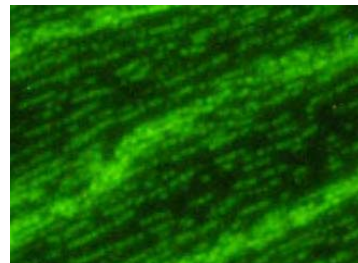
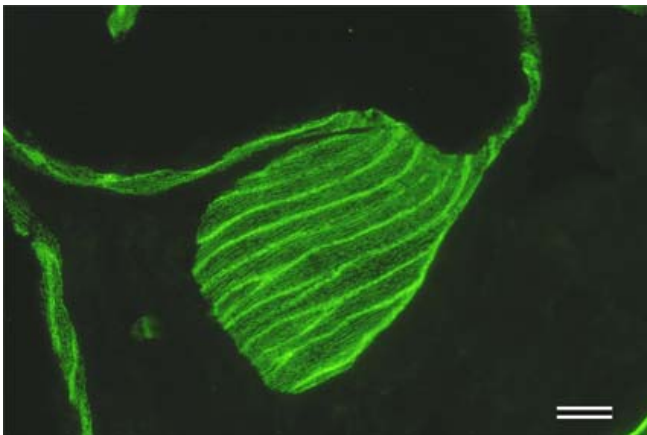
Western Blot analysis

Sample: Cell extract of DJM-1 cells 279 antibody recognized BP230 (230kDa Bullous Pemphigoid antigen) as a band at approximately 230 kDa.



Immunofluorescence (x20)

Human skin was analyzed by immunofluorescence with 279 antibody (1:50). Epidermal basal part containing BP230 is stained green. (Scale bar, 40 m)



Immunofluorescence (x40)

Bovine skin apocrine gland was analyzed by immunofluorescence with 279 (1:50). Hemidesmosomes in basal part of myoepithelial cells containing BP230 is stained green. (Scale bar, 20 m)

For research use only. Not for clinical diagnosis.



COSMO BIO Co., LTD.

Inspiration for Life Science

TOYO 2CHOME, KOTO-KU, TOKYO, 135-0016, JAPAN

URL: <http://www.cosmobio.co.jp>

e-mail: export@cosmobio.co.jp

[Outside Japan] Phone : +81-3-5632-9617

[国内連絡先] Phone : +81-3-5632-9610

FAX : +81-3-5632-9618

FAX : +81-3-5632-9619