



## MONOCLONAL ANTIBODY

*For research use only. Not for clinical diagnosis.*

**Catalog No. KTR012-20**

# Anti-human IL-17 Monoclonal Antibody

### BACKGROUND

Interleukin 17 (IL-17) is a proinflammatory cytokine produced by activated T cells. This cytokine regulates the activities of NF- $\kappa$ B and mitogenactivated protein kinases. It can stimulate the expression of IL-6 and cyclooxygenase-2 (PTGS2/COX-2), as well as enhance the production of nitric oxide.

<b>Product type</b>	Monoclonal antibodies
<b>Host</b>	Mouse
<b>Purification</b>	Protein A affinity chromatography
<b>Form</b>	Liquid
<b>Volume</b>	20ug
<b>Concentration</b>	400ug /mL in PBS, pH7.4
<b>Specificity</b>	Human IL-17
<b>Antigen</b>	The silkworm, <i>Bombyx mori</i> (baculovirus)-derived a recombinant human IL-17.
<b>Isotype</b>	IgG1
<b>Clone</b>	657-4

**Application notes** WB, Direct ELISA, Immunoprecipitation

#### Recommended use

#### Recommended dilutions

Western Blot: 1-2ug/ml for ECL

Direct ELISA: 0.5-2ug/ml

IP: use Protein G Sepharose, Antibody(1-10ug/ml),Antigen (0.1-1ug/ml)

Optimal dilutions/concentrations should be determined by the end user.

**Cross reactivity** Human IL-17. Other species has not been tested.

**Storage** Store at -20°C  
Avoid repeated freezing and thawing.

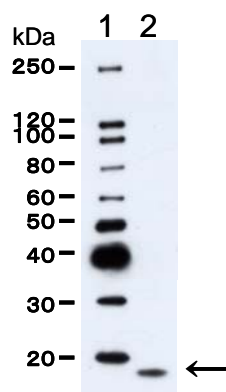


Figure: Western blot analysis of a recombinant IL-17.  
Lane 1: Marker  
Lane 2: Denaturing recombinant IL-17. (←)  
The protein bands were visualized with ECL detection system.

*For research use only. Not for clinical diagnosis.*



**COSMO BIO Co., LTD.**

Inspiration for Life Science

TOYO 2CHOME, KOTO-KU, TOKYO, 135-0016, JAPAN

URL: <http://www.cosmobio.co.jp>

e-mail: [export@cosmobio.co.jp](mailto:export@cosmobio.co.jp)

[Outside Japan] Phone : +81-3-5632-9617

[国内連絡先] Phone : +81-3-5632-9610

FAX : +81-3-5632-9618

FAX : +81-3-5632-9619