

MONOCLONAL ANTIBODY

For research use only. Not for clinical diagnosis.

Catalog No. KTR001-100

Anti-human Adiponectin Monoclonal Antibody

BACKGROUND

Adiponectin is a multimeric adipocyte-specific secretory protein that regulates energy homeostasis, lipid metabolism, and insulin sensitivity with direct anti-diabetic, anti-atherogenic and anti-inflammatory properties.

Product type	Monoclonal antibodies
Host	Mouse
Purification	Protein A affinity chromatography
Form	Liquid
Volume	100ug
Concentration	1mg /mL in PBS, pH7.4
Specificity	Human Adiponectin
Antigen	The silkworm, <i>Bombyx mori</i> (baculovirus)-derived a recombinant human Adiponectin
Isotype	IgG1
Clone	56

Application notes WB, Direct ELISA
Recommended use

Recommended dilutions

Western Blot: 1-2ug/ml for ECL

Direct ELISA: 0.5-2ug/ml

Optimal dilutions/concentrations should be determined by the end user.

Cross reactivity Human Adiponectin. Other species has not been tested.

Storage Store at -20°C
Avoid repeated freezing and thawing.

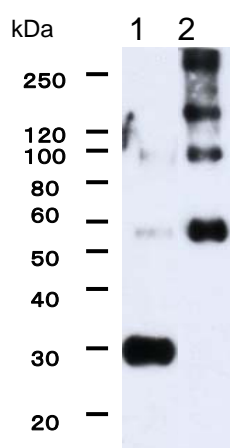


Figure: Western blot analysis of a recombinant Adiponectin.
Lane 1: Denaturing recombinant Adiponectin.
Lane 2: Non-denaturing recombinant Adiponectin.
The protein bands were visualized with ECL detection system.

For research use only. Not for clinical diagnosis.



COSMO BIO Co., LTD.

Inspiration for Life Science

TOYO 2CHOME, KOTO-KU, TOKYO, 135-0016, JAPAN

URL: <http://www.cosmobio.co.jp>

e-mail: export@cosmobio.co.jp

[Outside Japan] Phone : +81-3-5632-9617

[国内連絡先] Phone : +81-3-5632-9610

FAX : +81-3-5632-9618

FAX : +81-3-5632-9619