



POLYCLONAL ANTIBODY

For research use only. Not for clinical diagnosis.

Catalog No. CNP-TUBG1-060

Anti TUBG1

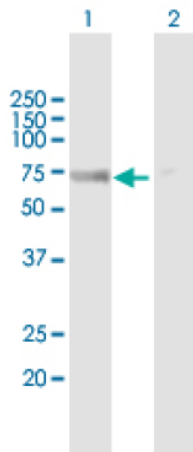
Product type	Primary antibodies
Immunogen	TUBG1 (NP_001061.2, 1 a.a. ~ 451 a.a) full-length human protein.
Form	Liquid Protein A purified
Volume	100ul
Specificity	Human
Host	Rabbit

Immunogen Sequence

MPREIITLQLGQCQGNQIGFEFWKQLCAEHGISPEGIVEEFATEGTDRKDVFFYQADDEHY
IPRAVLLDLEPRVIHSILNSPYAKLYNPENIYLSEHGGGAGNNWASGFSQGEKIHEDIFD
IIDREADGSDSLEGFVLCHSIAGGTGSGLSYLLERLNDRYPKKLVQTYSVFPNQDEMMSD
VVVQPYNSLLTLKRLTQNADCVVLDNTALNRIATDRLHIQNPSFSQINQLVSTIMSAST
TTLRYPGYMNNDLIGLIASLIPTPRLHFLMTGYTPLTTDQSVASVRKTTVLDVMRLLQP
KNVMVSTGRDRQTNHCYIAILNIIQGEVDPTQVHKSLQRIRERKLANFIPWGPASIQVAL
SRKSPYLP SAHRV SGLMMANHTSISSLFERTCRQYDKLRKREAFLEQFRKEDMFKDNFDE
MDTSREIVQQLIDEYHAATRPDYISWGTQEQ

Gene Alias	TUBG, TUBGCP1
Application notes	WB Antibody dilution: 1:1000 ~ 1:2000. Specific band of ~51.20 kDa using TUBG1 transfected 293T lysate.

Western Blotting (Transfected lysate)

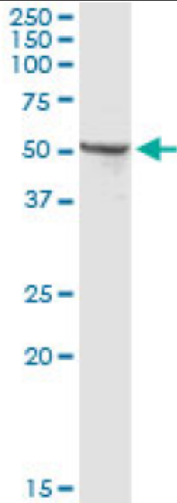


Western Blot analysis of TUBG1 expression in transfected 293T cell line by TUBG1 rabbit polyclonal antibody.

Lane 1: TUBG1 transfected lysate(51.20 KDa).
Lane 2: Non-transfected lysate.

Antibody dilution: 1:1000. Western Blot analysis of TUBG1 expression in mouse kidney (Predicted Mw: 51.1700 kDa).

Western Blotting (Tissue lysate)



TUBG1 rabbit polyclonal antibody. Western Blot analysis of TUBG1 expression in mouse kidney.

Storage

For continuous use, store at 2-8°C for one-two days. For extended storage, store in -20°C freezer. Working dilution samples should be discarded if not used within 12 hours.

For research use only. Not for clinical diagnosis.



COSMO BIO Co., LTD.

Inspiration for Life Science

TOYO 2CHOME, KOTO-KU, TOKYO, 135-0016, JAPAN

URL: <http://www.cosmobio.co.jp>

e-mail: export@cosmobio.co.jp

[Outside Japan] Phone : +81-3-5632-9617

[国内連絡先] Phone : +81-3-5632-9610

FAX : +81-3-5632-9618

FAX : +81-3-5632-9619