



POLYCLONAL ANTIBODY

For research use only. Not for clinical diagnosis.

Catalog No. CNP-SMARCA5-043

Anti SMARCA5

Product type	Primary antibodies
Immunogen	SMARCA5 (AAH23144.1, 1 a.a. ~ 1052 a.a) full-length human protein.
Form	Liquid Protein A purified
Volume	100ul
Specificity	Human
Host	Rabbit

**Immunogen
Sequence**

MSSAAEPPPPPPESAPSKPAASIASGGSNSSNKGPEGVAAQAVASAASAGPADAEMEE
IFDDASPGKQKEIQEPDPTYEEKMQTDRANRFEYLLKQTELFHFQPAQKTPTSPLKM
KPGRPRIKKDEKQNLLSVGDYRHRRTQEEDTESSKATNVCTRFEDSPSYVKWGKL
RDYQVRGLNWLISLYENGINGLADEMGLGKTLQTISLLGYMKHYRNIPGPHMVLVPKST
LHNWMSEFKRWVPTLRVCLIGDKEQRAAFVRDVLPGEDVVCVTSYEMLIKEKSVFKKF
NWRYLVIDEAHRIKNEKSKLSEIVREFKTTNRLLLTGTPLQNNLHELWLLNFPDVFN
SADDFDSWFDTNCLGDQKLVERLHMVLRPFLRRKADVEKSLPPKKEVKIYVGLSKMQ
REWYTRILMKDIDILNSAGKMDKMRLNLMQLRKCCNHPYLFDAEPGPPYTDMHLVT
NSGKMVVLDKLLPKLKEQGSRLVIFSQMTRVLDILEDYCMWRNYEYCRLDGQTPHDERQD
SINAYNEPNSTKVFVMLSTRAGGLINLATADVILYSDWNPQVDLQAMDRAHRIGQTK
TVRVRFITDNTVEERIVERAEMKLRLDSIVIQQGRLVDQNLNKIGKDEMLQMRHGATH
VFASKESITDEDIDGILERGAKKTAEMNEKLSKMGESSLRNFTMDTESSVYNFEGEDYR
EKQKIAFTEWIEPPKRERKANYAVDAYFREARVSEPKAPKAPRPPKQPNVQDFQFFPPR
LFELLEKEILFYRKTIGYKVPNPPELNAQAQKEEQKIDEAESLNDEELEEKEKLLTQ
GFTNWNKRDFNQFIKANEKWRDDIENIAREVEGKTPEEVIEYSVFWERCNELQDIEKI
MAQIERGEARIQRRISIKKALDTKIGRYKAPFHQLRISYGTNKGKKNYTEEEDRFLICMLH
KLGFDKENVYDELRCIRNSPQFRFDWFLKSRTAMELQRRCNTLITLIERENMELEEKEK
AEKKRGRPKPSTQKRKMDGAPDGRGRKKKLL

Gene Alias

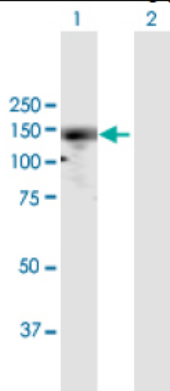
AMAC-1, AMAC1, CKb7, DC-CK1, DCCK1, MIP-4, PARC, SCYA18

Application notes

WB

Antibody dilution: 1:1000 ~ 1:2000. Specific band of ~121.90 kDa using SMARCA5 transfected 293T lysate.

Western Blotting (Transfected lysate)



Western Blot analysis of SMARCA5 expression in transfected 293T cell line by SMARCA5 rabbit polyclonal antibody.

Lane 1: SMARCA5 transfected lysate(121.90 kDa).

Lane 2: Non-transfected lysate.

Storage

For continuous use, store at 2-8°C for one-two days. For extended storage, store in -20°C freezer. Working dilution samples should be discarded if not used within 12 hours.

For research use only. Not for clinical diagnosis.



COSMO BIO Co., LTD.

Inspiration for Life Science

TOYO 2CHOME, KOTO-KU, TOKYO, 135-0016, JAPAN

URL: <http://www.cosmobio.co.jp>

e-mail: export@cosmobio.co.jp

[Outside Japan] Phone : +81-3-5632-9617

[国内連絡先] Phone : +81-3-5632-9610

FAX : +81-3-5632-9618

FAX : +81-3-5632-9619