



POLYCLONAL ANTIBODY

For research use only. Not for clinical diagnosis.

Catalog No. CNP-SCRY-555

Anti SCRY

Product type	Primary antibodies
Immunogen	SCLY (NP_057594.2, 1 a.a. ~ 445 a.a) full-length human protein
Form	Liquid Protein A purified
Volume	100ul
Specificity	Human
Host	Rabbit

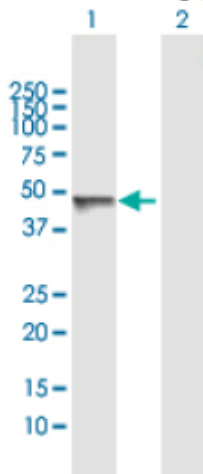
Immunogen Sequence
MEAAVAPGRDAPAPAASQPSGCGKHNSPERKVYMDYNATTPLEPEVIQAMTKAMWEAWGN
PSSPYSAGRKAKDIINAARES LAKMIGGKPQDIIFTSGGTESNNLVIHSVVKHFHANQTS
KGHTGGHHSPVKGAKPHFITSSVEHDSIRLPLEHLVEEQVAAVTFVPVSKVSGQTEVDDI
LAAVRPTTRLVTIMLANNETGIVMPVPEISQRIKALNQERVAAGLPPILVHTDAAQALGK
QRVDVEDLGVDFTIVGHKFGPRIGALYIRGLGEFTPLYPMLFGGGQERNFRPGTENTP
MIAGLGKAAELVTQNCEAYEAHMRDVRDYLEERLEAEFGQKRIHLNSQFPGTQRLPNTCN
FSIRGPRLQGHVVLQCRVLMASVGAACHSDHGDQPSVLLSYGVPFDVARNALRLSVGR
STTRAEVDLVVQDLKQAVAQLEDQA

Gene Alias HSU24186, MGC120333, MGC120334

Application notes **WB**

Antibody dilution: 1:1000 ~ 1:2000. Specific band of ~48.20 kDa using SCLY transfected 293T lysate

Western Blotting (Transfected lysate)

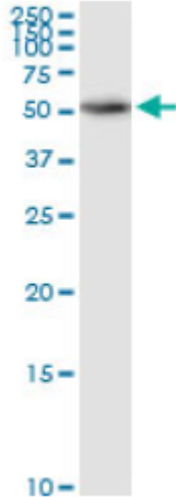


Western Blot analysis of SCLY expression in transfected 293T cell line by SCLY rabbit polyclonal antibody.

Lane 1: SCLY transfected lysate(48.20 KDa).
Lane 2: Non-transfected lysate.

Antibody dilution: 1:1000. Western Blot analysis of SCLY expression in HeLa (Predicted Mw: 48.1490 kDa).

Western Blotting (Cell lysate)

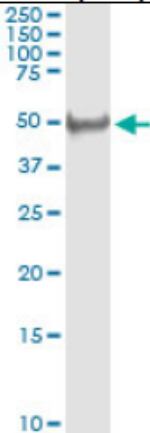


SCLY rabbit polyclonal antibody. Western Blot analysis of SCLY expression in HeLa.

IP

Antibody dilution 1:15 ~ 1:60 for immunoprecipitation of SCLY transfected lysate.

Immunoprecipitation



Immunoprecipitation of SCLY transfected lysate using SCLY rabbit polyclonal antibody and Protein A Magnetic Bead, and immunoblotted with SCLY purified mouse polyclonal antibody.

Storage

For continuous use, store at 2-8°C or one-two days. For extended storage, store in -20°C freezer. Working dilution samples should be discarded if not used within 12 hours.

For research use only. Not for clinical diagnosis.



COSMO BIO Co., LTD.

Inspiration for Life Science

TOYO 2CHOME, KOTO-KU, TOKYO, 135-0016, JAPAN

URL: <http://www.cosmobio.co.jp>

e-mail: export@cosmobio.co.jp

[Outside Japan] Phone : +81-3-5632-9617

[国内連絡先] Phone : +81-3-5632-9610

FAX : +81-3-5632-9618

FAX : +81-3-5632-9619