



**POLYCLONAL ANTIBODY**

*For research use only. Not for clinical diagnosis.*

**Catalog No. CNP-PRKAG1-452**

# Anti PRKAG1

<b>Product type</b>	Primary antibodies
<b>Immunogen</b>	PRKAG1 (NP_997626.1, 1 a.a. ~ 247 a.a) full-length human protein
<b>Form</b>	Liquid Protein A purified
<b>Volume</b>	100ul
<b>Specificity</b>	Human
<b>Host</b>	Rabbit

**Immunogen Sequence**  
MLTITDFINILHRYYSALVQIYELEEHHKIETWREVYLQDSFKPLVCISPNASLFDVSS  
LIRNKIHRPVIDPESGNTLYILTHKRILKFLKLFITEFPKPEFMSKSLEELQIGTYANI  
AMVRTTTPVYVALGIFVQHRVSALPVVDEKGRVVDIYSKFDVINLAAEKTYNNLDVSVTK  
ALQHRSHYFEGVLKCYLHETLETIINRLVEAEVHRLVVVDENDVVKGIVSLSDILQALVL  
TGGEKPP

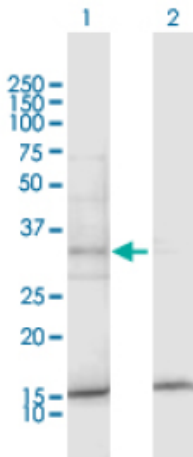
**Gene Alias** AMPKG, MGC8666

**Application notes**

**WB**

Antibody dilution: 1:1000 ~ 1:2000. Specific band of ~28.30 kDa using PRKAG1 transfected 293T lysate

**Western Blotting (Transfected lysate)**

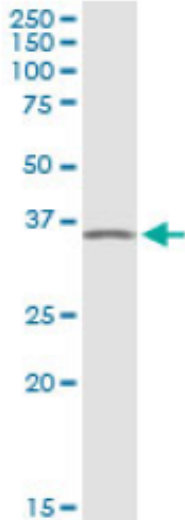


Western Blot analysis of PRKAG1 expression in transfected 293T cell line by PRKAG1 rabbit polyclonal antibody.

Lane 1: PRKAG1 transfected lysate(28.30 KDa).  
Lane 2: Non-transfected lysate.

Antibody dilution: 1:1000. Western Blot analysis of PRKAG1 expression in A-431 (Predicted Mw: 37.5790 kDa).

**Western Blotting (Cell lysate)**



PRKAG1 rabbit polyclonal antibody. Western Blot analysis of PRKAG1 expression in A-431.

**Storage**

For continuous use, store at 2-8°C for one-two days. For extended storage, store in -20°C freezer. Working dilution samples should be discarded if not used within 12 hours.

*For research use only. Not for clinical diagnosis.*



**COSMO BIO Co., LTD.**

Inspiration for Life Science

TOYO 2CHOME, KOTO-KU, TOKYO, 135-0016, JAPAN

URL: <http://www.cosmobio.co.jp>

e-mail: [export@cosmobio.co.jp](mailto:export@cosmobio.co.jp)

[Outside Japan] Phone : +81-3-5632-9617

[国内連絡先] Phone : +81-3-5632-9610

FAX : +81-3-5632-9618

FAX : +81-3-5632-9619