



**POLYCLONAL ANTIBODY**

*For research use only. Not for clinical diagnosis.*

**Catalog No. CNP-POLR3F-298**

# Anti POLR3F

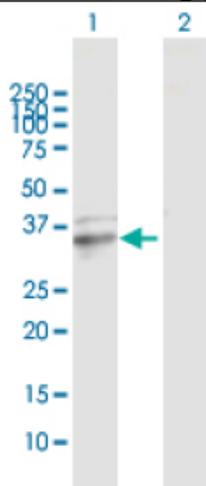
<b>Product type</b>	Primary antibodies
<b>Immunogen</b>	POLR3F (NP_006457.2, 1 a.a. ~ 316 a.a) full-length human protein..
<b>Form</b>	Liquid Protein A purified
<b>Volume</b>	100ul
<b>Specificity</b>	Human
<b>Host</b>	Rabbit

**Immunogen Sequence**  
MAEVKVKVQPPDADPVEIENRIIELCHQFPHGITDQVIQNEPHIEAQQRAVAINRLLSM  
GQLDLLRSNTGLLYRIKDSQNAGKMKGSDNQEKL VYQIIEDAGNKGIWSRDIRYKSNLPL  
TEINKILKNLESKLIKAVKSVAAASKKKVYMLYNLQPDRSVTGGAWYSDQDFESEFVEVL  
NQQCFKFLQSKAETARESKQNPMIQRNSSFASSHEVWKYICELGISKVELSMEDIETILN  
TLIYDGVKVENTIIAAKEGTVGSVDGHMKLYRAVNPIIPTGLVRAPCGLCPVFDDCHEGG  
EISPSNCIYMTEWLEF

**Gene Alias** MGC13517, RPC39, RPC6

**Application notes** **WB**  
Antibody dilution: 1:1000 ~ 1:2000. Specific band of ~35.70 kDa using POLR3F transfected 293T lysate.

**Western Blotting (Transfected lysate)**



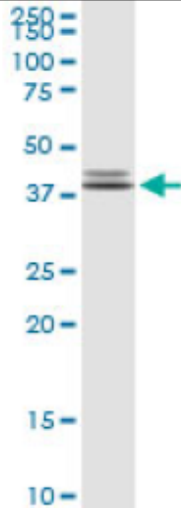
Western Blot analysis of POLR3F expression in transfected 293T cell line by POLR3F rabbit polyclonal antibody.

Lane 1: POLR3F transfected lysate(35.70 KDa).

Lane 2: Non-transfected lysate.

Antibody dilution: 1:1000. Western Blot analysis of POLR3F expression in HeLa (Predicted Mw: 35.6840 kDa).

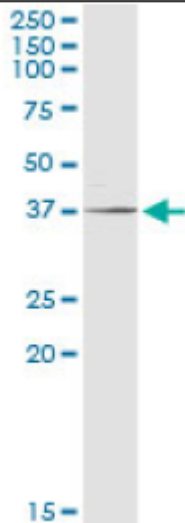
**Western Blotting (Cell lysate)**



POLR3F rabbit polyclonal antibody. Western Blot analysis of POLR3F expression in HeLa.

Antibody dilution: 1:1000. Western Blot analysis of POLR3F expression in human liver (Predicted Mw: 35.6840 kDa).

**Western Blotting (Tissue lysate)**



POLR3F rabbit polyclonal antibody. Western Blot analysis of POLR3F expression in human liver.

**Storage**

For continuous use, store at 2-8°C for one-two days. For extended storage, store in -20°C freezer. Working dilution samples should be discarded if not used within 12 hours.

*For research use only. Not for clinical diagnosis.*



**COSMO BIO Co., LTD.**

Inspiration for Life Science

TOYO 2CHOME, KOTO-KU, TOKYO, 135-0016, JAPAN

URL: <http://www.cosmobio.co.jp>

e-mail: [export@cosmobio.co.jp](mailto:export@cosmobio.co.jp)

[Outside Japan] Phone : +81-3-5632-9617

[国内連絡先] Phone : +81-3-5632-9610

FAX : +81-3-5632-9618

FAX : +81-3-5632-9619