



**POLYCLONAL ANTIBODY**

*For research use only. Not for clinical diagnosis.*

**Catalog No. CNP-PNPT1-022**

**Anti PNPT1**

<b>Product type</b>	Primary antibodies
<b>Immunogen</b>	PNPT1 (NP_149100.1, 1 a.a. ~ 783 a.a) full-length human protein.
<b>Form</b>	Liquid
	Protein A purified
<b>Volume</b>	100ul
<b>Specificity</b>	Human
<b>Host</b>	Rabbit

**Immunogen Sequence**

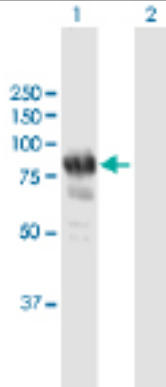
MAACRYCCSCLRLRPLSDGPFLLPRRDRALTQLQVRALWSSAGSRAVAVDLGNRKLEISS  
GKLARFADGSAVVQSGDTAVMVTAVSKTKPSQFMPLVVDYRQKAAAAGRIPTNYLRRE  
VGTSDKEILTSRIIDRSIRPLFPAGYFYDTQVLCNLLAVDGVNEPDVLAINGASVALSLS  
DIPWNGPVGAVRIGIIDGEYVNPTRKEMSSSTLNLVVAGAPKSQIVMLEASAENILQQD  
FCHAIKVGVKYQQIIQGIQQLVKETGVTKRTPQKLFPSPEIVKYTHKLAMERLYAVFT  
DYEHDKVS RDEAVNKIRLDTEEQLKEKFPEADPYEIIESFNVVAKEVFRSIVLNEYKRC  
GRDLTSLRNVSCVDMFKTLHGSAFQRGQTQVLCTVTFDSLESGIKSDQVITAINGIKD  
KNFMLHYEFPYATNEIGKVTGLNRRELGHGALAEKALYPVIPRDFPFTIRVTSEVLESN  
GSSMASACGGLALMDSGVPISAVAGVAIGLVTKTDPEKGEIEDYRLLTDILGIEDYN  
GDMDFKIAGTNKGITALQADIKLPGIPIKIVMEAIQQASVAKKEILQIMNKTISKPRASR  
KENGPPVETVQVPLSKRAKRVGPGGYNLKKLQAETGVTISQVDEETFSVFAPTPSAMHEA  
RDFITEICKDDQEQQLFEGAVYTATITEIRD TGVMVKLYPNMTAVLLHNTQLDQRKIKHP  
TALGLEVGQEIQVKYFGRDPADGRMRLSRKVLQSPATTVVRTLNDRSSIVMGEPISQSSS  
NSQ

**Gene Alias** DKFZp762K1914, OLD35, PNPASE, old-35

**Application notes**

**WB**  
Antibody dilution: 1:1000 ~ 1:2000. Specific band of ~85.90 kDa using PNPT1 transfected 293T lysate.

Western Blotting (Transfected lysate)



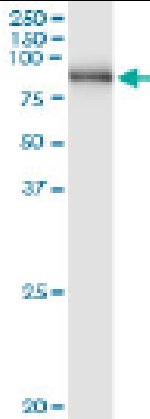
Western Blot analysis of PNPT1 expression in transfected 293T cell line by PNPT1 rabbit polyclonal antibody.

Lane 1: PNPT1 transfected lysate(85.90 kDa).  
Lane 2: Non-transfected lysate.

## IP

Antibody dilution 1:15 ~ 1:60 for immunoprecipitation of PNPT1 transfected lysate.

### Immunoprecipitation



Immunoprecipitation of PNPT1 transfected lysate using PNPT1 rabbit polyclonal antibody and Protein A Magnetic Bead, and immunoblotted with PNPT1 purified mouse polyclonal antibody.

## Storage

For continuous use, store at 2-8°C for one-two days. For extended storage, store in -20°C freezer. Working dilution samples should be discarded if not used within 12 hours.

*For research use only. Not for clinical diagnosis.*



**COSMO BIO Co., LTD.**

Inspiration for Life Science

TOYO 2CHOME, KOTO-KU, TOKYO, 135-0016, JAPAN

URL: <http://www.cosmobio.co.jp>

e-mail: [export@cosmobio.co.jp](mailto:export@cosmobio.co.jp)

[Outside Japan] Phone : +81-3-5632-9617

[国内連絡先] Phone : +81-3-5632-9610

FAX : +81-3-5632-9618

FAX : +81-3-5632-9619