



POLYCLONAL ANTIBODY

For research use only. Not for clinical diagnosis.

Catalog No. CNP-PGDS-101

Anti PGDS

Product type Primary antibodies

Immunogen PGDS (NP_055300.1, 1 a.a. ~ 199 a.a) full-length human protein.

Form Liquid
Protein A purified

Volume 100ul

Specificity Human

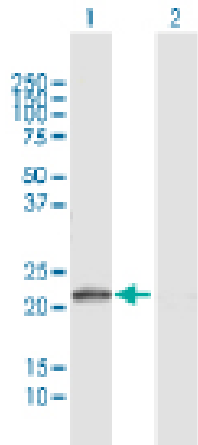
Host Rabbit

Immunogen Sequence MPNYKLTYFNMRGRAEIIIRYIFAYLDIQYEDHRIEQADWPEIKSTLPFGKIPILEVDGLT
LHQSLAIARYLTKNTDLAGNTEMEQCHVDAIVDTLDDFMSCFPWAEKKQDVKEQMFNELL
TYNAPHLMQDLDTYLGGREWLIGNSVTWADFYWEICSTLLVFKPDLDDNHPRLVTLRKK
VQAIPAVANWIKRRPQTKL

Gene Alias CAMP-GEFI, EPAC, EPAC1, HSU79275, MGC21410, bcm910

Application notes **WB**
Antibody dilution: 1:1000 ~ 1:2000. Specific band of ~23.30 kDa using PGDS transfected 293T lysate.

Western Blotting (Transfected lysate)



Western Blot analysis of PGDS expression in transfected 293T cell line by PGDS rabbit polyclonal antibody.

Lane 1: PGDS transfected lysate(23.30 kDa).

Lane 2: Non-transfected lysate.

Storage

For continuous use, store at 2-8°C for one-two days. For extended storage, store in -20°C freezer. Working dilution samples should be discarded if not used within 12 hours.

For research use only. Not for clinical diagnosis.



COSMO BIO Co., LTD.

Inspiration for Life Science

TOYO 2CHOME, KOTO-KU, TOKYO, 135-0016, JAPAN

URL: <http://www.cosmobio.co.jp> e-mail: export@cosmobio.co.jp

[Outside Japan] Phone : +81-3-5632-9617 [国内連絡先] Phone : +81-3-5632-9610

FAX : +81-3-5632-9618

FAX : +81-3-5632-9619