



POLYCLONAL ANTIBODY

For research use only. Not for clinical diagnosis.

Catalog No. CNP-OSBPL10-386

Anti OSBPL10

Product type	Primary antibodies
Immunogen	OSBPL10 (NP_060254.2, 1 a.a. ~ 764 a.a) full-length human protein.
Form	Liquid Protein A purified
Volume	100ul
Specificity	Human
Host	Rabbit

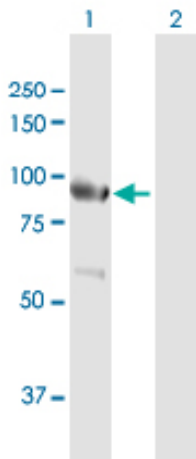
Immunogen Sequence

MERAVQGTDGGGGSNSSSRSSSRATSAGSSPSCSLAGRGVSSRSAAAGLGGGGSRSSPGS
 VAASPSGGGRRREPALGVLVSKYTNLLQGWQNRVFLDFEAGILQYFVNEQSKHQKPRG
 VLSLSGAIVLSLDEAPHMLVVYSANGEMFKLRAADAKEKQFWVTQLRACAKYHMEMNSKS
 APSSRSRSLTLLPHGTPNSASPCSQRHLSVGAPGVVTTIHHKSPAAARRAKSQYSGQLHE
 VREMMNQVEGQKQNLVHAIESLPGSGPLTALDQDLLLLKATSAATLSCLGECLNLLQQSV
 HQAGQPSQKPGASENILGWHGSKSHSTEQLKNGTLGSLPSASANITWAILPNSAEDEQTS
 QPEPEPNSGSELVLSSEDEKSDNEDKEETELGVMEDQRSIILHLISQLKLGMDLTKVVLPT
 FILEKRSLLEMYADFMHPDLLLLAITAGATPEERVICFVEYYLTAFHEGRKGALAKKPYN
 PIIGETFHCSWEVPKDRVVKPKRTASRSPASCHEHPMADDPKSKYKLRVFAEQVSHHPPIS
 CFYCECEEKRLCVNTHVWTKSKFMGMSVGVSMIGEGVLRLLHEGEEYVFTLPSAYARSIL
 TIPWVELGGKVSINCAKTGYSATVIFHTKPFYGGKVHRVTAEVKHNPTNTIVCKAHGEWN
 GTLEFTYNNGETKVIDTTTTLPVYPKIRPLEKQGPMEARNLWREVTYRLRLGDIDAATEQ
 KRHLEEKQRVEERKRENLRTPWKPKYFIQEGDGVVYFNPLWKAH

FLJ20363, ORP10, OSBP9

Application notes Antibody dilution: 1:1000 ~ 1:2000. Specific band of ~84.00 kDa using OSBPL10 transfected 293T lysate.

Western Blotting (Transfected lysate)



Western Blot analysis of OSBPL10 expression in transfected 293T cell line by OSBPL10 rabbit polyclonal antibody.

Lane 1: OSBPL10 transfected lysate(84.00 KDa).
 Lane 2: Non-transfected lysate.

Storage

For continuous use, store at 2-8°C for one-two days. For extended storage, store in -20°C freezer. Working dilution samples should be discarded if not used within 12 hours.

For research use only. Not for clinical diagnosis.



COSMO BIO Co., LTD.

Inspiration for Life Science

TOYO 2CHOME, KOTO-KU, TOKYO, 135-0016, JAPAN

URL: <http://www.cosmobio.co.jp>

e-mail: export@cosmobio.co.jp

[Outside Japan] Phone : +81-3-5632-9617

[国内連絡先] Phone : +81-3-5632-9610

FAX : +81-3-5632-9618

FAX : +81-3-5632-9619