



POLYCLONAL ANTIBODY

For research use only. Not for clinical diagnosis.

Catalog No. CNP-OAT-413

Anti OAT

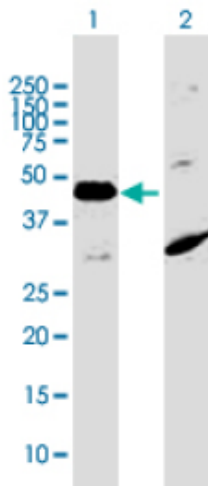
Product type	Primary antibodies
Immunogen	OAT (NP_000265.1, 1 a.a. ~ 439 a.a) full-length human protein.
Form	Liquid Protein A purified
Volume	100ul
Specificity	Human
Host	Rabbit

Immunogen Sequence
MFSKLAHFQRFAVLSRQVHSSVASATSVATKKTVQGPPTSDDIFEREYKYGAHNYHPLPV
ALERGGKIYLDVVEGRKYFDLSSYSAVNQGHCHPKIVNALKSQVDKLTLSRAFYNVNL
GEYEEYITKLFNYHKVLPMTGVEAGETACKLARKWGYTVKGIQKYKAKIVFAAGNFWGR
TLSAISSSTDPTSVDGFGPFMPGFDIIPYNDLPALERALQDPNVAAFMVEPIQGEAGVVV
PDPGYLMGVRELCTRHQVLFIADEIQTGLARTGRWLAVDYENVRPDIVLLGKALSGGLYP
VSAVLCDDDIMLTIKPGHEGSTYGGNPLGCRVAIAALEVLEENLAENADKLGILRNEL
MKLPDSDVVTAVRGKLLNAIVIKETKDWDWAKVCLRLRDNGLLAKPTHGDIIRFAPPLVI
KEDELRESIEIINKTILSF

Gene Alias DKFZp781A11155, HOGA

Application notes **WB**
Antibody dilution: 1:1000 ~ 1:2000. Specific band of ~48.50 kDa using OAT transfected 293T lysate

Western Blotting (Transfected lysate)



Western Blot analysis of OAT expression in transfected 293T cell line by OAT rabbit polyclonal antibody.

Lane 1: OAT transfected lysate(48.50 KDa).
Lane 2: Non-transfected lysate.

Storage

For continuous use, store at 2-8°C for one-two days. For extended storage, store in -20°C freezer. Working dilution samples should be discarded if not used within 12 hours.

For research use only. Not for clinical diagnosis.



COSMO BIO Co., LTD.

Inspiration for Life Science

TOYO 2CHOME, KOTO-KU, TOKYO, 135-0016, JAPAN

URL: <http://www.cosmobio.co.jp>

e-mail: export@cosmobio.co.jp

[Outside Japan] Phone : +81-3-5632-9617

[国内連絡先] Phone : +81-3-5632-9610

FAX : +81-3-5632-9618

FAX : +81-3-5632-9619