

POLYCLONAL ANTIBODY

For research use only. Not for clinical diagnosis.

Catalog No. CNP- IP-372

Anti C4orf43

Product type	Primary antibodies
Immunogen	C4orf43 (AAH11842.1, 1 a.a. ~ 203 a.a) full-length human protein.
Form	Liquid Protein A purified
Volume	100ul
Specificity	Human
Host	Rabbit
Immunogen Sequence	MPKAPKGSAGREKKVIHPYSRKAQAQITREAHKQEKKEKLKNEKALRLNLVGEKLQWFQN HLDPPKKRYSKKDACELIERYLNRFSSLEQIELHNSIRDQRGRRHCSRETVIKQTMERE RQQFEGYGLEIPDILNASNLKTFREWDFDLKKLPNIKMRKICANDAIPKTCKRKTITVD QDLGELELNDESSDSDEEMTAVA

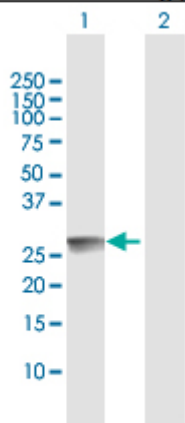
FLJ11184

Application notes

WB

Antibody dilution: 1:1000 ~ 1:2000. Specific band of ~23.80 kDa using C4orf43 transfected 293T lysate.

Western Blotting (Transfected lysate)



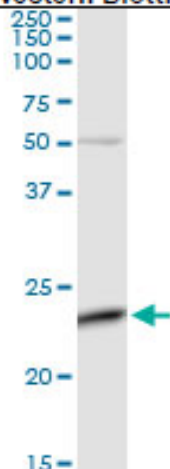
Western Blot analysis of C4orf43 expression in transfected 293T cell line by C4orf43 rabbit polyclonal antibody.

Lane 1: C4orf43 transfected lysate(23.80 KDa).

Lane 2: Non-transfected lysate.

Antibody dilution: 1:1000. Western Blot analysis of C4orf43 expression in mouse kidney (Predicted Mw: 23.8210 kDa).

Western Blotting (Tissue lysate)

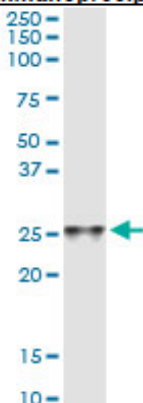


C4orf43 rabbit polyclonal antibody. Western Blot analysis of C4orf43 expression in mouse kidney.

IP

Antibody dilution 1:15 ~ 1:60 for immunoprecipitation of C4orf43 transfected lysate.

Immunoprecipitation



Immunoprecipitation of C4orf43 transfected lysate using C4orf43 rabbit polyclonal antibody and Protein A Magnetic Bead, and immunoblotted with C4orf43 purified mouse polyclonal antibody.

Storage

For continuous use, store at 2-8°C for one-two days. For extended storage, store in -20°C freezer. Working dilution samples should be discarded if not used within 12 hours.

For research use only. Not for clinical diagnosis.



COSMO BIO Co., LTD.

Inspiration for Life Science

TOYO 2CHOME, KOTO-KU, TOKYO, 135-0016, JAPAN

URL: <http://www.cosmobio.co.jp>

e-mail: export@cosmobio.co.jp

[Outside Japan] Phone : +81-3-5632-9617

[国内連絡先] Phone : +81-3-5632-9610

FAX : +81-3-5632-9618

FAX : +81-3-5632-9619